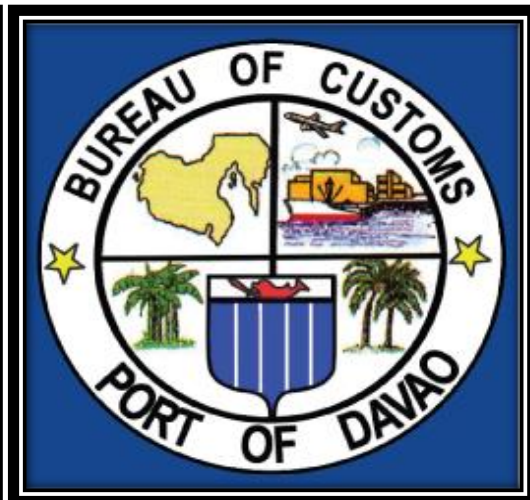
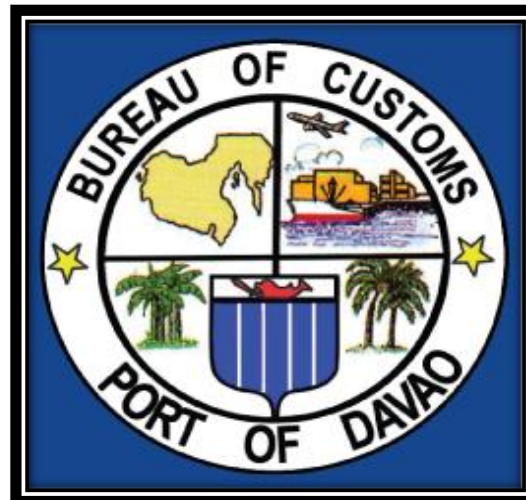


PORT OF DAVAO

Decree:	AP NO. 12-2014	
Arrival Date:	11/13/2013	
Location:	SASA	
Container No.:	10x40' MSKU0074734, PONU7527513, PONU7982327, SEAU8659132, SEAU8664437, MRKU2398392, MRKU2444190, MRKU2820240, MRKU3661040, MRKU3696730	
Consignee:	ASIAWIDE REFRESHMENTS CORP.	
Actual Contents: <i>Indicate the specific description including the quality, condition, volume or quantity.</i> <i>In case of motor vehicle, specify the year model, make or brand, Vehicle Identification Number (VIN), chassis and engine numbers, except when sold as Scrap</i>	1. EMPTY RC COLA BOTTLES	



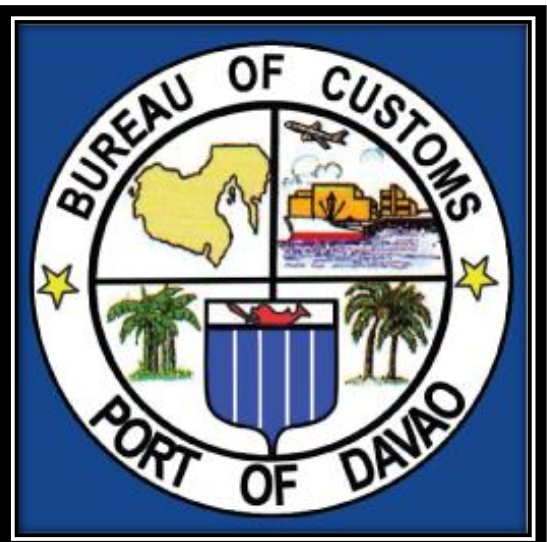
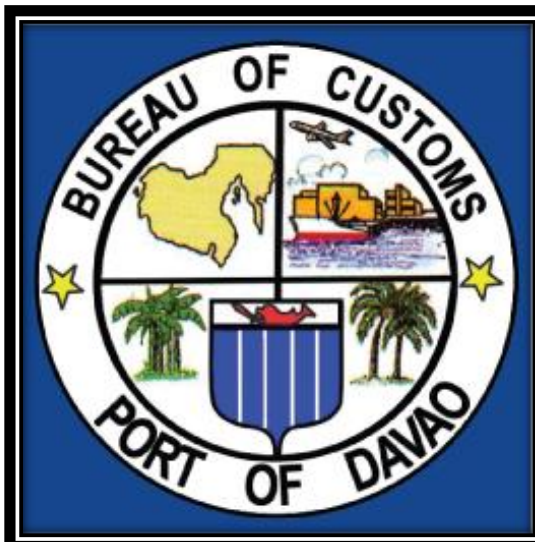
PORT OF DAVAO

Decree:	AP NO. 22-2019	
Arrival Date:	4/5/2018	
Location:	SASA	
Container No.:	1X40' SEGU5986585	
Consignee:	CTSI LOGISTICS PHILS INC.	
Actual Contents: <i>Indicate the specific description including the quality, condition, volume or quantity.</i> <i>In case of motor vehicle, specify the year model, make or brand, Vehicle Identification Number (VIN), chassis and engine numbers, except when sold as Scrap</i>	1. 1 SET OF USED OIL REFINER MACHINE, INLINE SKATES, KIA BONGGO PARTS	



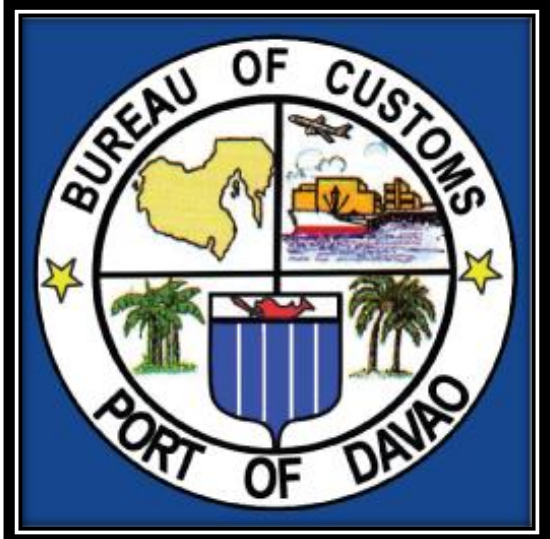
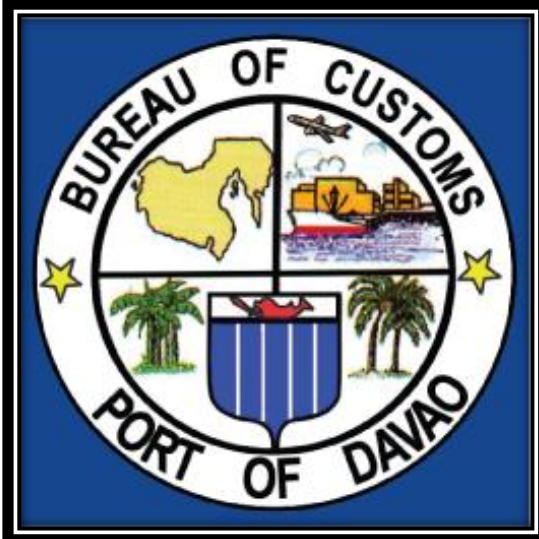
PORT OF DAVAO

Decree:	AP NO. 11-2019	
Arrival Date:	5/1/2019	
Location:	SASA	
Container No.:	1X40' SUDU6977401	
Consignee:	HEXAMINDZ CORPORATION	
Actual Contents: <i>Indicate the specific description including the quality, condition, volume or quantity.</i> <i>In case of motor vehicle, specify the year model, make or brand, Vehicle Identification Number (VIN), chassis and engine numbers, except when sold as Scrap</i>	1. BRAND: HYUNDAI 4PKGS 1 UNIT WHEEL LOADER (MODEL: HL635L)	



PORT OF DAVAO

Decree:	AP NO. 10-2019	
Arrival Date:	01/20/2019	
Location:	SASA	
Container No.:	SEGREGATED	
Consignee:	HEXAMINDZ CORPORATION	
Actual Contents: <i>Indicate the specific description including the quality, condition, volume or quantity.</i> <i>In case of motor vehicle, specify the year model, make or brand, Vehicle Identification Number (VIN), chassis and engine numbers, except when sold as Scrap</i>	1. 1 UNIT EXCAVATOR (MODEL: ROBEX 80-7) BRAND: HYUNDAI	



PORT OF DAVAO

Decree:	AP NO. 09-2019	
Arrival Date:	01/20/2019	
Location:	SASA	
Container No.:	SEGREGATED	
Consignee:	HEXAMINDZ CORPORATION	
Actual Contents: <i>Indicate the specific description including the quality, condition, volume or quantity.</i> <i>In case of motor vehicle, specify the year model, make or brand, Vehicle Identification Number (VIN), chassis and engine numbers, except when sold as Scrap</i>	1. 2 UNITS EXCAVATOR (MODEL: ROBEX 140LC-95); BRAND: HYUNDAI 2. 1 UNIT WHEEL LOADER (MODEL: ROBEX HL730-S) BRAND: HYUNDAI	



PORT OF DAVAO

Decree:	AP NO. 80-2020	
Arrival Date:	06/14/2019	
Location:	SASA	
Container No.:	1X40' TLLU2129333	
Consignee:	D DESIGN TRADING	
Actual Contents: <i>Indicate the specific description including the quality, condition, volume or quantity.</i> <i>In case of motor vehicle, specify the year model, make or brand, Vehicle Identification Number (VIN), chassis and engine numbers, except when sold as Scrap</i>	1. PORCELAIN TILES	



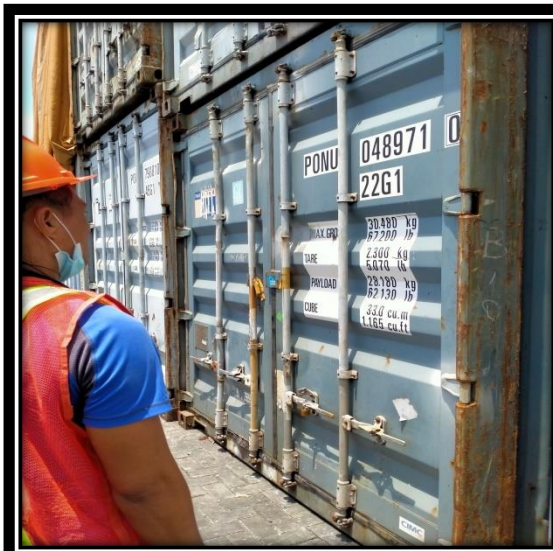
PORT OF DAVAO

Decree:	AP NO. 36-2017	
Arrival Date:	02/21/2016	
Location:	TEFASCO	
Container No.:	1X40' SEGU4233571	
Consignee:	YOKO MIYAZEN MARKETING	
Actual Contents: <i>Indicate the specific description including the quality, condition, volume or quantity.</i> <i>In case of motor vehicle, specify the year model, make or brand, Vehicle Identification Number (VIN), chassis and engine numbers, except when sold as Scrap</i>	<ol style="list-style-type: none"> 84 PACKAGES USED EMPTY POLY PAIL USED PLYWOOD 	



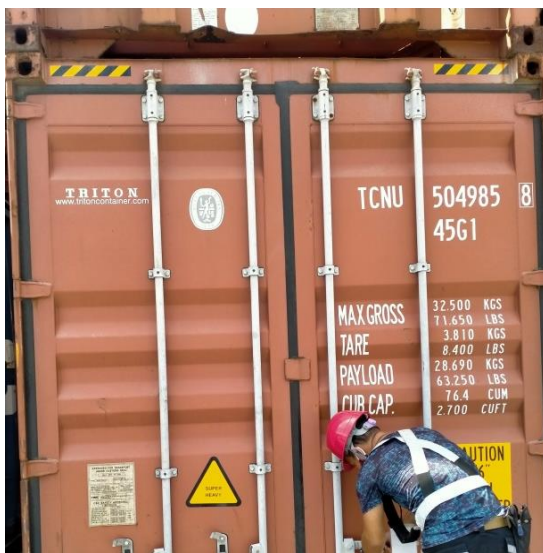
PORT OF DAVAO

Decree:	AP NO 08-2019	
Arrival Date:	2/12/2018	
Location:	SASA	
Container No.:	1X40' PONU0489710	
Consignee:	MRSB TRADING	
Actual Contents: <i>Indicate the specific description including the quality, condition, volume or quantity.</i> <i>In case of motor vehicle, specify the year model, make or brand, Vehicle Identification Number (VIN), chassis and engine numbers, except when sold as Scrap</i>	1. PLASTIC GRANULES	



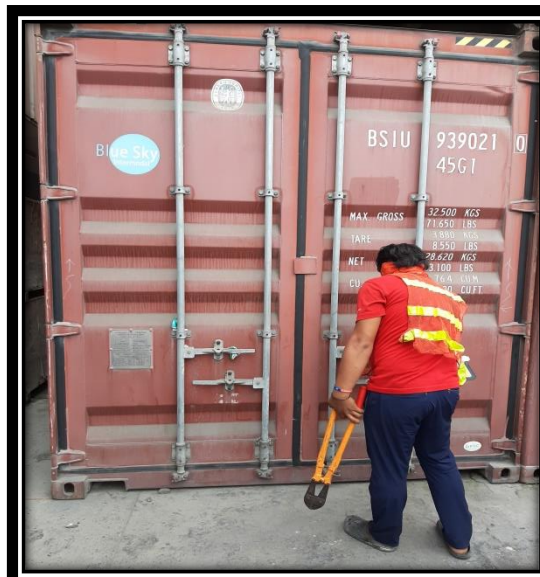
PORT OF DAVAO

Decree:	AP NO. 18-2019	
Arrival Date:	6/6/2018	
Location:	DICT	
Container No.:	2X40' TCNU5049858, TCNU7674406	
Consignee:	PHILDUTCH POLYMER INC	
Actual Contents: <i>Indicate the specific description including the quality, condition, volume or quantity.</i> <i>In case of motor vehicle, specify the year model, make or brand, Vehicle Identification Number (VIN), chassis and engine numbers, except when sold as Scrap</i>	1.ACRYLIC POLYMERS POLYMETHYL METHACRYLATE	



PORT OF DAVAO

Decree:	AP NO. 10-2015	
Arrival Date:	03/20/2015	
Location:	TEFASCO	
Container No.:	1X40' BSIU9390210	
Consignee:	E. LOREN ENGINEERING CONSTRUCTION	
Actual Contents: <i>Indicate the specific description including the quality, condition, volume or quantity.</i> <i>In case of motor vehicle, specify the year model, make or brand, Vehicle Identification Number (VIN), chassis and engine numbers, except when sold as Scrap</i>	1. USED LATE MODEL TELEVISION	



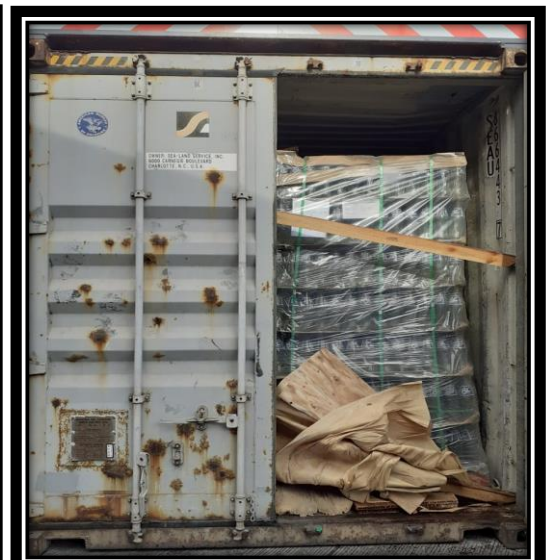
PORT OF DAVAO

Decree:	AP NO. 39-2016	
Arrival Date:	07/05/2014	
Location:	SASA	
Container No.:	1X40' MAEU8378653	
Consignee:	SHIPCO TRANSPORT PHILS. INC.	
Actual Contents: <i>Indicate the specific description including the quality, condition, volume or quantity.</i> <i>In case of motor vehicle, specify the year model, make or brand, Vehicle Identification Number (VIN), chassis and engine numbers, except when sold as Scrap</i>	VARIOUS HOUSEHOLD ITEMS (OLD CELLPHONE CASES, NURSERY ACCESSORIES, TOYS, DOLLS, MUGS, FIGURINES, NECK PILLOW, KIDDY BACKPACK, ETC.)	



PORT OF DAVAO

Decree:	AP NO. 13-2014	
Arrival Date:	11/17/2013	
Location:	SASA	
Container No.:	6X40' MRKU2454496, MRKU2755735, MRKU2818129, MRKU3821744, MSKU3821744, MSKU1338723, MSKU1518330	
Consignee:	ASIAWIDE REFRESHMENTS CORP.	
Actual Contents: <i>Indicate the specific description including the quality, condition, volume or quantity.</i> <i>In case of motor vehicle, specify the year model, make or brand, Vehicle Identification Number (VIN), chassis and engine numbers, except when sold as Scrap</i>	1. RC COLA FLINT BOTTLES (240 ML; 800 ML)	



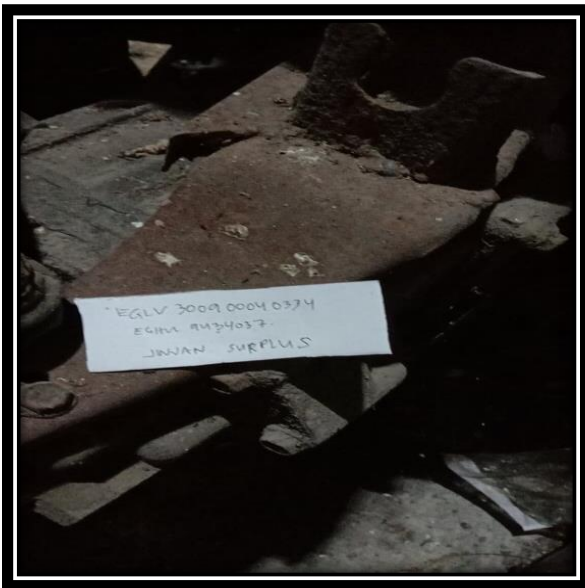
PORT OF DAVAO

Decree:	AP NO. 09-2013	
Arrival Date:	05/31/2015	
Location:	SASA	
Container No.:	1X40' REGU4201866	
Consignee:	PARADIGM MARINE TRADING	
Actual Contents: <i>Indicate the specific description including the quality, condition, volume or quantity.</i> <i>In case of motor vehicle, specify the year model, make or brand, Vehicle Identification Number (VIN), chassis and engine numbers, except when sold as Scrap</i>	1. EMPTY STYRO FOAM BOX WITH LID	



PORT OF DAVAO

Decree:	DSI NO 18-2019	
Arrival Date:	9/9/2019	
Location:	DICT WAREHOUSE	
Container No.:	SEGREGATED FROM EGHU944037	
Consignee:	JINJAN SURPLUS TRADING	
Actual Contents: <i>Indicate the specific description including the quality, condition, volume or quantity.</i> <i>In case of motor vehicle, specify the year model, make or brand, Vehicle Identification Number (VIN), chassis and engine numbers, except when sold as Scrap</i>	1. TWO UNITS USED ENGINE	



PORT OF DAVAO

Decree:	DSI 49-2014	
Arrival Date:	08/24/2014	
Location:	TEFASCO	
Container No.:	1X40' FCIU9238896	
Consignee:	NASHVILLE GENERAL MERCHANDISE	
Actual Contents: <i>Indicate the specific description including the quality, condition, volume or quantity.</i> <i>In case of motor vehicle, specify the year model, make or brand, Vehicle Identification Number (VIN), chassis and engine numbers, except when sold as Scrap</i>	1. USED TRUCK REPLACEMENT PARTS	



PORT OF DAVAO

Decree:	AP NO. 15-2013	
Arrival Date:	10/15/2013	
Location:	TEFASCO	
Container No.:	1X40' CMAU4255880	
Consignee:	ZHENJI INDUSTRIAL SUPPLY	
Actual Contents: <i>Indicate the specific description including the quality, condition, volume or quantity.</i> <i>In case of motor vehicle, specify the year model, make or brand, Vehicle Identification Number (VIN), chassis and engine numbers, except when sold as Scrap</i>	1. USED TRUCK REPLACEMENT PARTS	



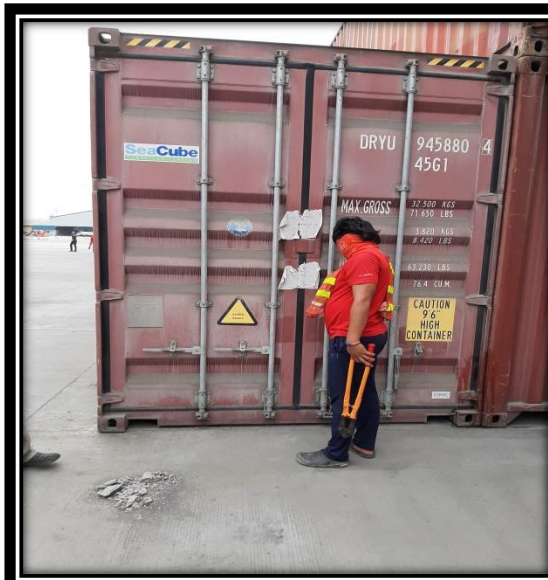
PORT OF DAVAO

Decree:	WSD NO. 32-2015	
Arrival Date:	01/17/2015	
Location:	SASA	
Container No.:	1X40' SEAU8643650	
Consignee:	SOFTRICH TRADING/EON GLOBAL INT'L MARKETING INC	
Actual Contents: <i>Indicate the specific description including the quality, condition, volume or quantity.</i> <i>In case of motor vehicle, specify the year model, make or brand, Vehicle Identification Number (VIN), chassis and engine numbers, except when sold as Scrap</i>	1. USED TRUCK REPLACEMENT PARTS (CABIN, AXLE, RADIATOR, SPRING, START MOTOR, TRANSMISSION, ETC.)	



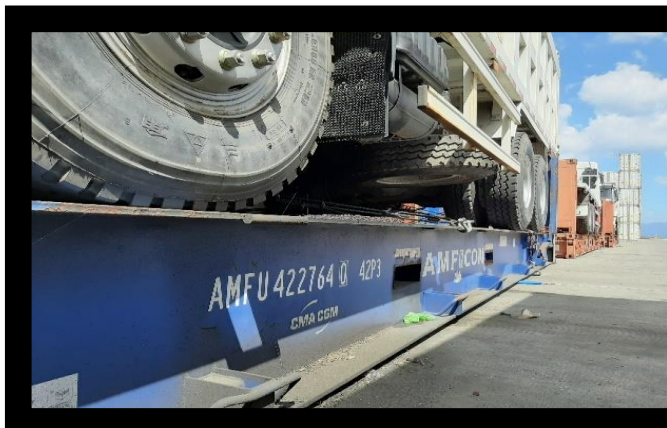
PORT OF DAVAO

Decree:	DSI NO. 06-2013	
Arrival Date:	3/8/2013	
Location:	TEFASCO	
Container No.:	1X40' DRYU9458804	
Consignee:	DMA ENTERPRISES	
Actual Contents: <i>Indicate the specific description including the quality, condition, volume or quantity.</i> <i>In case of motor vehicle, specify the year model, make or brand, Vehicle Identification Number (VIN), chassis and engine numbers, except when sold as Scrap</i>	1. USED CKD HONDA FIT PARTS	



PORT OF DAVAO

Decree:	AP NO. 17-2019
Arrival Date:	01/17/2019
Location:	DICT
Container No.:	6X40' TRIU0815834, TRIU0790192, TRIU0775304, TEXU8957718, AMFU4227640, TLLU1475244
Consignee:	HEXAMINDZ CORPORATION
Actual Contents: <i>Indicate the specific description including the quality, condition, volume or quantity.</i> <i>In case of motor vehicle, specify the year model, make or brand, Vehicle Identification Number (VIN), chassis and engine numbers, except when sold as Scrap</i>	1. 6 UNITS BRAND NEW DUMP TRUCK TRIU0815834, DUMP TRUCK Chassis # LZ5N2CD39JB013035 Engine # CM6D18 375 40 *118 F10 764* TRIU0790192, DUMP TRUCK Chassis # LZ5NCD33JB013032 Engine # CM6D18 375 40 *118 F10 742* TRIU0775304, DUMP TRUCK Chassis # LZ5N2CD31JB013051 Engine # CM6D18 375 40 *118 F10 745* TEXU8957718, DUMP TRUCK Chassis # Not Available Engine # Not Available AMFU4227640, DUMP TRUCK Chassis # LZ5N2CD32JB013023 Engine # CM6D18 375 40 *118 F10 738* TLLU1475244, DUMP TRUCK Chassis # LZ5N2CD37JB013030 Engine # CM6D18 375 40 *118 F10 744*



PORT OF DAVAO

Decree:	DSI NO. 04-2019	
Arrival Date:	01/25/2019	
Location:	DICT WAREHOUSE	
Container No.:	SEGREGATED FROM HLXU3403629	
Consignee:	CHARISSE S. SIA SU	
Actual Contents: <i>Indicate the specific description including the quality, condition, volume or quantity.</i> <i>In case of motor vehicle, specify the year model, make or brand, Vehicle Identification Number (VIN), chassis and engine numbers, except when sold as Scrap</i>	1. 2 UNITS OF USED MOTORCYCLES (FIRST MODEL: KAWASAKI NINJA GPZ 600R YEAR 1985 SECOND MODEL: YAMAHA XJ600 YEAR 1991)	



PORT OF MANILA



PORT OF MANILA



box

10 containers

AP = 2018-022

PORT OF MANILA

ITEM # 1438500 "G WAY MANUFACTURING" AP 2018-022)
AS FOUND: TECHNOSOL G55
AS FOUND: TECHNOSOL G55
RECOMMENDATIONS: FOR AUCTION



PORT OF MANILA



PORT OF MANILA

(X20' SEGU1907382 "G WAY MANUFACTURING" (AP 2016-02)

AS DECLARED: TECHNISOIL G55

AS FOUND: TECHNISOIL G55 (8.1-8.3 LBS/ GALLON) / 1000KG

RECOMMENDATIONS FOR AUCTION

SEGU	1907382
2261	
NET	36 480 KGS 81 200 LBS
TARE	7 180 KGS 15 810 LBS
Payload	29 300 KGS 65 390 LBS
Notes	Brigantine, Baltimore



TechniSoils

PORT OF MANILA

(X20' HDMU284667 "3 WAY MANUFACTURING" (AP-2018-002)
AS DECLARED: TECHNISOIL G5S
AS FOUND: TECHNISOIL G5S (8 1/2 LBS) / 1000 KG
RECOMMENDATION FOR AUCTION



PORT OF MANILA

2525 ZIMU112257E *G W W Y MANUFACTURING AP 2019-002)
AS DECLARED: TECHNISOIL G5S
AS FOUND: TECHNISOIL G5S
RECOMMENDATIONS: FOR AUCTION



PORT OF MANILA

FEB 10, 2020
ICD-CALAMBA
AP 2019-159
APHU6840416



APHU6840416
27°C
10/02/2020



APHU6840416
27°C
10/02/2020

PORT OF MANILA

FEB 10, 2020
ICD-CALAMBA
AP 2019-169
APHU6840416



PORT OF MANILA

FEB 10, 2020
ICD-CALAMBA
AP 2019-169
APHU6840416



PORT OF MANILA

FEB 10, 2020
ICD-CALAMBA
AP 2019-169
APHU6840416



PORT OF MANILA

FEB 10, 2020
ICD-CALAMBA
AP 2019-169
APHU6840416



PORT OF MANILA



PORT OF MANILA



PORT OF MANILA



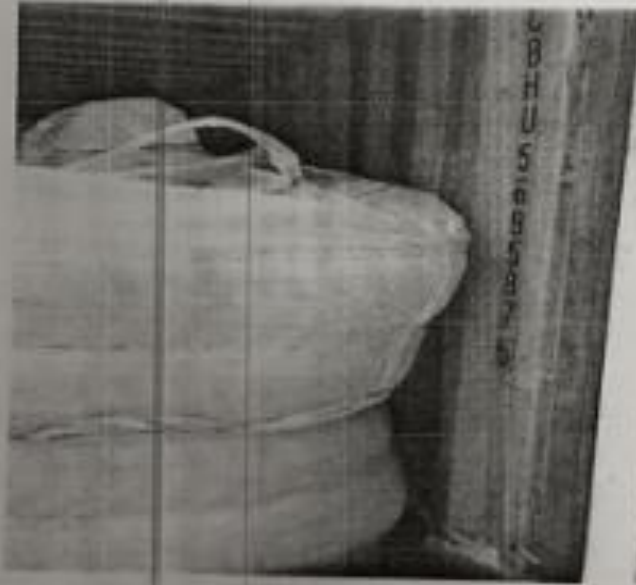
PORT OF MANILA

1X20' CBHU5695875 "REFRACORE CORPORATIO" (AP 2013-032)

AS DECLARED: CALCINED DOLOMITE

AS FOUND:

RECOMMENDATION:



PORT OF MANILA



PORT OF MANILA

K9-SWEEPING AT NO.18 MAIN ROAD, MURALLA INDUSTRIAL
PARK PEREZ, MEYCAUAYAN, BULACAN



PORT OF MANILA



PORT OF MANILA



PORT OF MANILA



PORT OF MANILA

FEBRUARY 27, 2020
ICD-CALAMBA
AP 2019-140
IPXU3426134



IPXU3426134
27°C
27/02/2020

PORT OF MANILA

FEBRUARY 27, 2020
ICD - CALAMBA
AP 2019-103
IPXU/3426134



PORT OF MANILA

FEBRUARY 27, 2020
ICD CALAMBA
AP 2015-169
IPXU3426134



PORT OF MANILA



PORT OF MANILA



PORT OF MANILA

FEBRUARY 27, 2020
ICD-CALAMBA
AP 2019-169
ZINR1115465



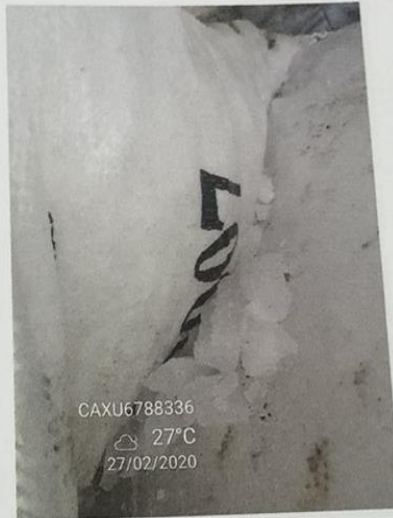
PORT OF MANILA

FEBRUARY 27, 2020
ICD-CALAMBA
AP 2019-169
CAGI06788336



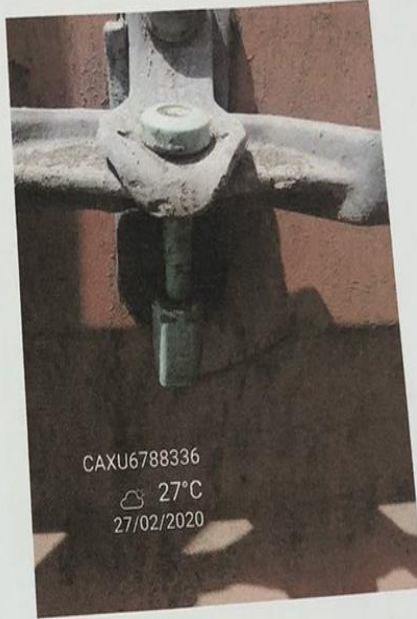
PORT OF MANILA

FEBRUARY 27, 2020
ICD-CALAMBA
AP 2019-169
CAXU6788336



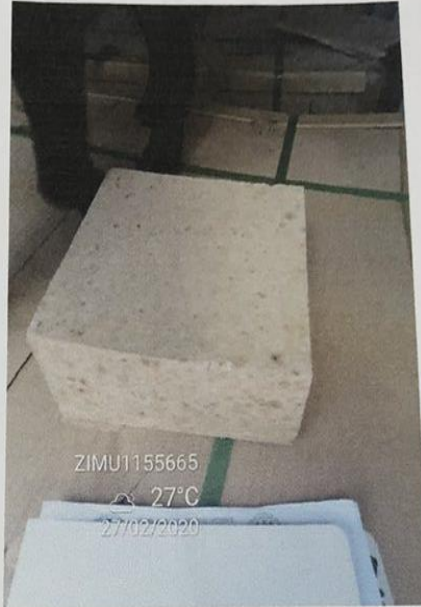
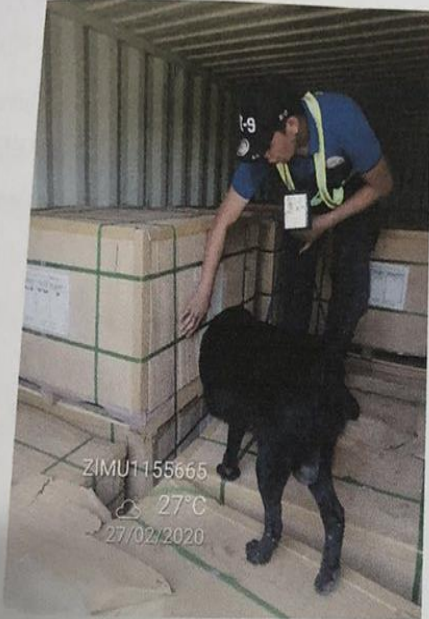
PORT OF MANILA

FEBRUARY 27, 2020
ICD-CALAMBA
AP 2019-169
CAXU6788336



PORT OF MANILA

FEBRUARY 27, 2020
ICD-CALAMBA
AP 2019-169
ZIMU1155665



PORT OF MANILA