

**MEMORANDUM**

**TO : ALL DISTRICT COLLECTORS
HEAD, BOC CUSTOMER CARE CENTERS
ALL OTHERS CONCERNED**

FROM : REY LEONARDO B. GUERRERO
Commissioner *Ag*



BOC-07-01691

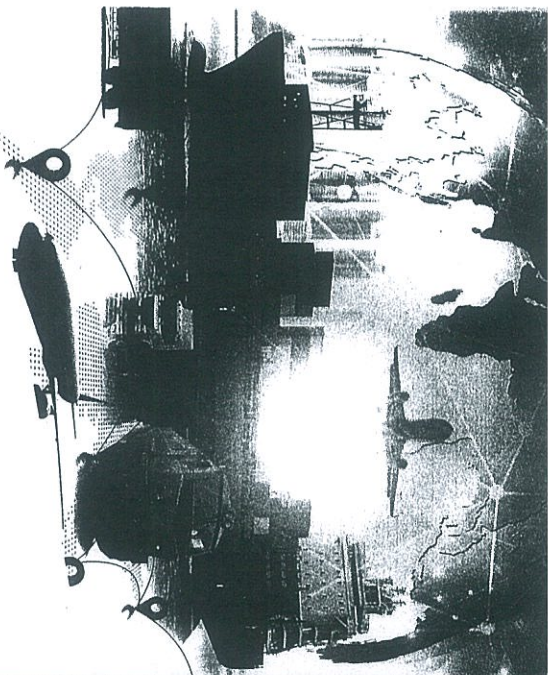
**SUBJECT : DISSEMINATION OF NSW BROCHURES TO
STAKEHOLDERS THRU THE BUREAU OF CUSTOMS
CUSTOMER CARE CENTERS**

DATE : 18 April 2022

In November 2021, the USAID ASEAN Policy Implementation (API) Project provided technical assistance to the Bureau of Customs for the implementation of the National Single Window (NSW) Public Awareness Campaign Program.

In this regard, all BOC Customer Care Centers are directed to disseminate the NSW brochures to all stakeholders. These brochures aim to provide an overview of the NSW Task Force for Cargo Clearance and the ASEAN Single Window (ASW) Regional Exchange, including the onboarding journey of Trade Regulatory Government Agencies (TRGAs). This may be beneficial in increasing the awareness of stakeholders on the NSW and ASEAN Single Window (ASW) initiatives and promoting their benefits as drivers of trade facilitation and cross-border paperless trade.

For guidance and strict compliance.



WHAT IS THE PHILIPPINE NATIONAL SINGLE WINDOW?

The National Single Window (NSW) is a system that enables a single submission of data and information that is synchronously processed, resulting in a single point of decision for the release of cargoes by Customs, based on the Trade Regulatory Government Agencies' role dynamics and communicated in a timely manner to Customs.

The National Single Window is integrated with the ASEAN Single Window (ASW), a regional trade facilitation platform, jointly led by ASEAN Member States (AMS) with support from the U.S. Agency for International Development (USAID). Its objective is to expedite cargo clearances and promote ASEAN economic integration by allowing the electronic exchange of trade-related documents.

As of 2022, the Philippines is exchanging the electronic Certificate of Origin (ATIGA e-Form D) and the ASEAN Customs Declaration Document (ACDD) using the NSW and the ASW systems.

The Bureau of Customs believes that through inter-agency cooperation and digital innovations, starting with the National Single Window (NSW) System, we are doing our part in helping our country become more competitive, expanding economic ties with trading partners, and moving towards paperless trade.

Commissioner Rey Leonardo B. Guerrero
Bureau of Customs
Chair, NSW-Technical Working Group (NSW-TWG)



USAID

FROM THE AMERICAN PEOPLE



The U.S. Agency for International Development (USAID) helps advance the ASEAN Single Window (ASW) expansion at the Member State level, through the USAID ASEAN Policy Implementation (API) project. In partnership with the Bureau of Customs (BOC), USAID supports the strengthening of the Philippines NSW through the development of the ASEAN Customs Declaration Document (ACDD) Operator Portal and routing platform, along with public awareness activities. This assistance can expedite the Philippines' full participation in the cross-border exchange of the ACDD using the single-window enabling platforms.

The Bureau of Customs (BOC) is the lead government agency for inter-agency collaboration among participating Trade Regulatory Government Agencies (TRGAs) working to establish an ASW-linked National Single Window in the Philippines. The BOC serves as the conduit that will facilitate Philippine trade data exchanges at the national and regional levels.

GET IN TOUCH

Bureau of Customs Website: customs.gov.ph
BOC Call Center Hotline Service: (02) 8705-6000
Philippine NSW (TRADENET): tradenet.gov.ph
USAID ASEAN Policy Implementation Project
Contact: etan@lbi-worldwide.com

THE PHILIPPINE NATIONAL SINGLE WINDOW (NSW)

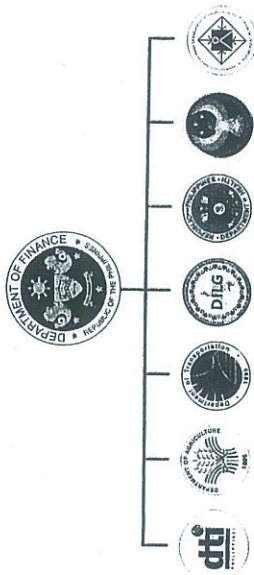


THE NSW TASK FORCE

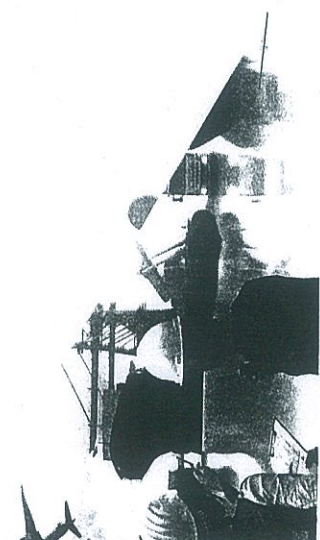
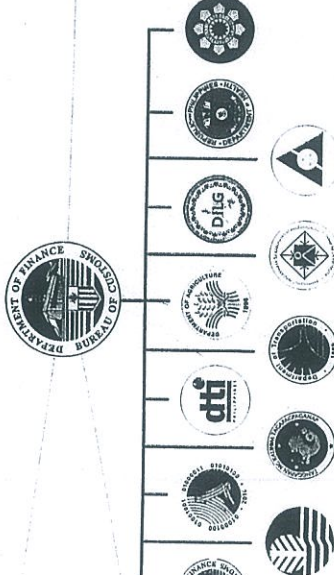
Executive Order No. 482 s. 2005 created the National Single Window (NSW) Task Force for Cargo Clearance to bring about a more efficient and effective service to the public.

The NSW Task Force is composed of a Steering Committee and a Technical Working Group.

The NSW Steering Committee (NSWSC) is a high level committee chaired by the Secretary of Finance responsible for ensuring the effective and efficient implementation of the NSW and ASW.



The NSW Technical Working Group (NSW-TWG) is presided over by the Bureau of Customs responsible for the implementation of policies and directives of the Steering Committee by coordinating the activities incumbent for the establishment, implementation, operation and monitoring of the NSW and ASW.



THE BOC AND NSW TECHNICAL WORKING GROUP


The Bureau of Customs, as the National Single Window - Technical Working Group (NSW-TWG) Chair, is assisted by the Anti-Red Tape Authority (ARTA) as the NSW-TWG Vice Chair for Onboarding Matters, and the BOC Management Information System and Technology Group (MISTG) as the Vice Chair for Technical Matters.

THE NSW-TWG CLUSTERS AND CLUSTER CHAIRPERSONS


- 1 Department of Agriculture (DA)
NSW-TWG Agriculture and Food Cluster
- 2 Department of Finance - Central Management Information Office (DOF-CMIO)
NSW-TWG ASEAN Single Window Cluster
- 3 Department of Finance - Revenue Office (DOF-RO)
NSW-TWG Tax and Duty Exempt Cluster
- 4 DTI Strategic Trade Management Office (DTI-STIMO)
NSW-TWG Chemicals, Oils, Minerals, Environment, Drugs and Dangerous Goods Cluster
- 5 DTI Export Marketing Bureau (DTI-EMB)
NSW-TWG General Merchandise and Retail Goods Cluster
- 6 Department of Social Welfare and Development (DSWD)
NSW-TWG Relief, Consignment, and Foreign Donations Cluster
- 7 Philippine Economic Zone Authority (PEZA)
NSW-TWG Ecozones and Freeport Zones Cluster
- 8 Anti-Red Tape Authority (ARTA)
NSW-TWG Logistics and Port Operations Cluster
- 9 Export Development Council (EDC)
NSW-TWG Monitoring and Oversight Cluster

GOVERNMENT AGENCIES INVOLVED IN THE NSW

A total of 86 Trade Regulatory Government Agencies (TRGAs) are involved in the NSW implementation. These participating TRGAs may be identified as:




Regulatory TRGAs - refers to agencies that are mandated by law to process and issue permits, licenses, certificates or accreditation prior to the importation or exportation of goods.



Monitoring and Oversight TRGAs - agencies that do not issue any import and export related permits, licenses, certificates or accreditation but uses trade data to process statistical reports, trends, profiling, analysis and for other purposes.



Ecozones and Freeport Zones TRGAs - refers to TRGAs and entities that govern the special economic zones (SEZ), free trade zones and free ports in the Philippines.



Policy TRGAs - refers to TRGAs that provide advisory, legal and technical inputs for the effective implementation of the NSW and ASW without the need for trade data generated by the system.

NSW GOVERNING BODY

The National Single Window - Technical Working Group Project Team
The National Single Window - Technical Working Group (NSW-TWG) Project Team and its Secretariat assist the Commissioner of Customs in the implementation of the NSW and ASW.

The TradeNet Project Management Office

The TradeNet Project Management Office (TPMO) is an Ad Hoc Project Management Team within the Department of Finance duly authorized by the NSWSC to act for and on behalf of the NSWSC Secretariat in the conduct of onboarding the TRGAs in the Tradenetgovph platform. The PMO office creates the graphical representations of the detailed and stepwise process flow of the intended system, process, or procedure to be uploaded onto the TradeNetgovph (NSW) platform. This onboarding process is based on the prescribed steps under Business Process Analysis designed by the United Nations Economic and Social Commission for Asia and the Pacific (UNESCAP).

The Agency Counterpart Team

The Agency Counterpart Team (ACT) shall refer to the TRADENET Project Management Office of the respective TRGAs. This body will be responsible for the execution of TRADENET onboarding activities, under the guidance of the TPMO. In addition to this, the ACT will serve as the counterpart and focal point of the coordination that is critical for the completion of the agency onboarding and co-creation process.