



Time Release Study Results



Contents of Presentation



Introduction
Scope and Objectives of TRS



2021 Results
Import and Export



2021 Results
versus previous TRS



Recommendation
from 2020 TRS Enhancements made in 2021



Recommendations
based on 2021 TRS Enhancements to be made

Time Release Study



Unique tool and method for measuring the actual performance of the Bureau as they directly relate to trade facilitation at the border.

As a result of the TRS, factors which delay or affect the immediate release of goods can be identified and addressed accordingly by the Bureau.

OBJECTIVES



Improve the effectiveness and efficiency of the Customs cargo clearance process by determining the port's performance in processing and release of cargoes.



Identify the bottlenecks in the supply chain for purposes of instituting possible corrective measures or trade facilitation improvements.



Identify the possible corrective measures and recommendations for the seamless flow of goods, and opportunities for trade facilitation improvements.



If applicable, determine and assess the Port's performance by comparing the results of the average time of import and export cargoes from previous TRS



If applicable, review the improvements and innovations that have been instituted, as a result of the recommendations in the 2019 TRS.

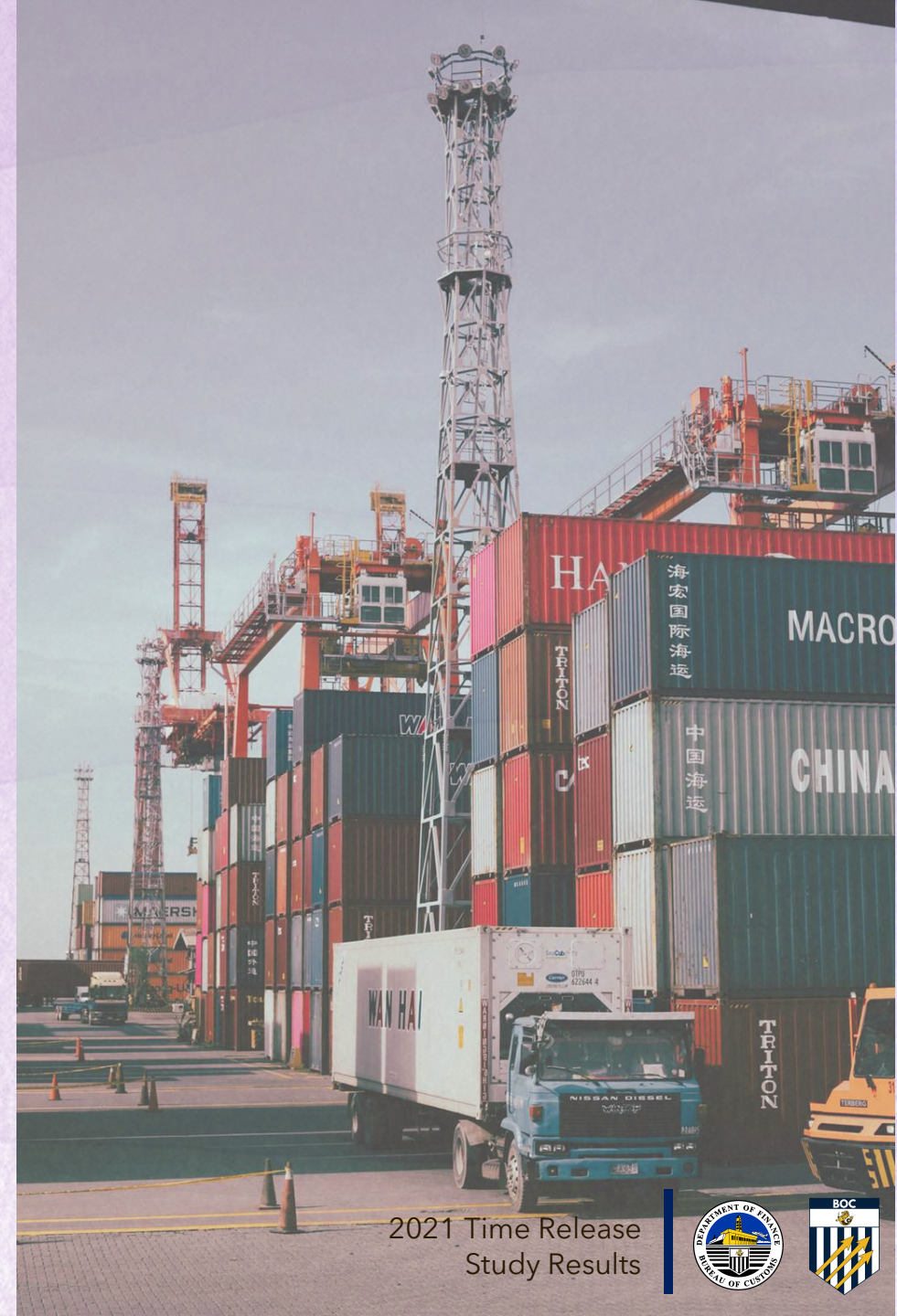
SCOPE

Scope Item	Inclusion
Geographical	17 Collection Districts
Mode of Transport	Sea, Air
Customs Regime	Import, Export
Type of Cargo	Containerized cargo Bulk and Breakbulk
Categories of Traders	Commercial, Private
Agencies - Government	Trade Regulatory Government agencies
Agencies - Private	Port operators shipping lines



Time Release Study 7-day Period

#	Port	Import	Export
1	Clark	June 7-14	June 11 - July 2
2	Cebu	May 11-19	May 24 - June 1
3	Subic	May 31- June 8	May 31- June 8
4	NAIA	May 24 - June 1	May 24 - June 1
5	San Fernando	September 20-28	September 20-28
6	Batangas	September 20-28	September 20-28
7	Iloilo	September 14-22	September 14-22
8	Limay	September 20-28	September 20-28
9	Aparri	November 15-23	September 20-28
10	Tacloban	September 20-28	September 20-28
11	Legaspi	September 20-28	September 20-28
12	Surigao	May 20-28	September 20-28
13	Manila	November 15-23	November 8-16
14	Zamboanga	November 8-16	November 8-16
15	Cagayan De Oro	November 8-16	November 8-16
16	Davao	November 8-16	November 8-16
17	MICP	November 8-16	November 8-16



2021 Time Release
Study Results



IMPORTATION PROCESS

This study divided the whole cargo clearance and cargo movement process. These stages are recorded with time stamps in the BOC system and port terminal operators.

- S1 – Inward Foreign Manifest (IFM) Registration
- S2 – IFM/Ship Arrival
- S3 – Single Administrative Document (SAD) Lodgment
- S4 – Portal Upload
- S5 – Portal Retrieval of Document (FED Received)
- S6 – Single Administrative Document (SAD) Registration
- S7 – Assessment
- S8 – Online Releases Instruction/ Customs Release
- S9 – Port Delivery of Goods/Gate out



Time Measurement

Import Process



PRE-CUSTOMS

The overall average time from **Receipt of Notice of Arrival** or **IFM Registration** to **Portal Upload**



POST-CUSTOMS

The overall average time from **SAD Payment/OLRS** to **Gate-out** or **Manual Release**



CUSTOMS

The overall average time from **Portal Upload** to **SAD Payment/OLRS**



IMPORT PROCESS

From **Receipt of Notice of Arrival** or **IFM Registration** to **Gate Out** or **Manual Release**



CUSTOMS PROCESS

The overall average time from
Portal Upload to **SAD
Payment/OLRS**

Import Process		
Rank	Port	Customs Processing
1	Aparri	2 hrs 50 mins
2	Zamboanga	6 hrs 31 mins
3	Legazpi	14 hrs 21 mins
4	Limay	22 hrs 57 mins
5	CDO	1 day 19 hrs 56 mins
6	Iloilo	2 days 1 hr 24 mins
7	SFLU	2 days 2 hrs 8 mins
8	MICP	2 days 2 hrs 42 mins
9	Subic	2 days, 12 hrs, 11 mins
10	POM	3 days, 1 hr, 24 mins
11	NAIA	3 days, 11 hrs, 35 mins
12	Cebu	4 days 7 hrs, 17 mins
13	Davao	4 days, 10 hrs, 27 mins
14	Batangas	5 days, 2 hrs, 9 mins
15	Clark	5 days, 12 hrs, 55 mins.
16	Surigao &	5 days, 18 hrs, 33 mins
17	Tacloban	





IMPORT PROCESS

From Receipt of Notice of Arrival or **IFM Registration to Gate Out or Manual Release**

Rank	Port	Overall Import Process
1	Limay	3 days 2 hrs 7 mins
2	Aparri	5 days 1 hour 43 mins
3	SFLU	5 days 4 hrs 57 mins
4	Zamboanga	5 days 22 hrs 17 mins
5	Batangas	6 days 9 hrs 20 mins
6	NAIA	6 days 13 hrs 3 mins
7	POM	6 days 18 hrs 25 mins
8	Iloilo	7 days 14 hrs 35 mins
9	CDO	8 days 4 hrs 41 mins
10	MICP	8 days 11 hrs 22 mins
11	Davao	8 days 18 hrs 4 mins
12	Cebu	8 days 23 hrs 25 mins
13	Subic	9 days 6 hrs 42 mins
14	Legazpi	6 days 9 hrs 20 mins
15	Clark	15 days 12 hrs 4 mins
16	Surigao &	15 days 22 hrs 56 mins
17	Tacloban	



EXPORTATION PROCESS

The cargo clearance and cargo movement have been divided into six (6) stages as follows:

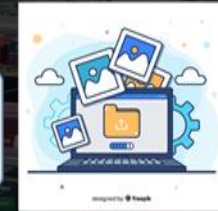
- S1 - Lodgment of Export Declaration
- S2 - Portal Upload
- S3 - Portal retrieval of ticket/Processing by Export Division
- S4 - Issuance of Authority to Load by Export Division
- S5 - Posting and Recording of Containers
- S6 - Clearance (for vessel departure)

EXPORT

Lodgment



Portal Upload



Export Division Processing



Issuance of Authority to Load



Posting and Recording of Containers



Issuance of Clearance



Time Measurement

Export Process

CUSTOMS



The overall average time from **Export Declaration Lodgment** to **Issuance of Authority to Load**

POST-CUSTOMS



The overall average time from **Issuance of Authority to Load** to **Issuance of Clearance**

EXPORT PROCESS



From **Export Declaration Lodgment** to **Departure of Vessel or Aircraft**



CUSTOMS PROCESS

The overall average time from **Export Declaration Lodgment** to **Issuance of Authority to Load**

Export Process		
Rank	Port	Customs Processing
1	Clark	10 mins
2	NAIA	11 mins
3	Zamboanga	49 mins
4	Subic	56 mins
5	Iloilo	2 hrs 13 mins
6	Limay	5 hrs 32 mins
7	MICP	6 hrs 32 mins
8	POM	12 hrs 9 mins
9	Batangas	14 hrs 6 mins
10	CDO	15 hrs 24 mins
11	SFLU	17 hrs 54 mins
12	Tacloban	20 hrs 26 mins
13	Cebu	1 day 12 hrs
14	Surigao	2 days 15 hrs 8 mins
15	Davao	2 days 19 hrs 7 mins
16	Legazpi	4 days 16 hrs 34 mins
17	Aparri	6 days 17 hrs





EXPORT PROCESS

The overall average time from **Export Declaration Lodgment** to **Issuance of Authority to Load**

Export Process		
Rank	Port	Customs Processing
1	Subic	4 hrs 36 mins
2	Clark	8hrs 52 mins
3	NAIA	21 hrs 19 mins
4	CDO	2 days 10 hrs 22 mins
5	Zamboanga	5 days 12 hrs 39 mins
6	Cebu	5 days 22 hrs 3 mins
7	Limay	6 days 8 hrs 35mins
8	POM	6 days 11 hrs 29 mins
9	Davao	6 days 16 hrs 9 mins
10	Iloilo	7 days 5 hrs 11 mins
11	SFLU	7 days 8 hrs 22 mins
12	MICP	7 days 8 hrs 52 mins
13	Batangas	8 days 12 hrs 42 mins
14	Aparri	8 days 15 hrs 25 mins
15	Tacloban	12 days 2 hrs 11 mins
16	Legazpi	13 days 16 hrs 14 mins
17	Surigao	16 days 8 hrs 23 mins



TRS Import Results

2020

2021

Manila



2 days 9 hours
44 minutes



3 days 1 hour
24 minutes

Davao



2 days 15 hours
37 minutes



4 days 10 hours
27 minutes

CDO (MCT)



1 day, 17 hours,
10 minutes



1 day, 19 hours,
56 minutes

Zamboanga



*No importation
processed during the
period*

6 hours 31 minutes

TRS Export Results

2020

2021

18 hours, 17 minutes



12 hours, 9 minutes



Manila

21 hours, 21 minutes



2 days 19 hours,
7 minutes



Davao

19 hours, 6 minutes



15 hours, 24 minutes



CDO (MCT)

3 days, 15 hours, 28
minutes



49 minutes



Zamboanga



Manila International Container Port

2019

2020

2021

Import

2 days, 10 hours,
3 minutes



2 days,
36 minutes



2 days, 2 hours
42 minutes

Export

1 hour,
11 minutes



13 hours,
53 minutes



6 hours,
32 minutes

Conclusion



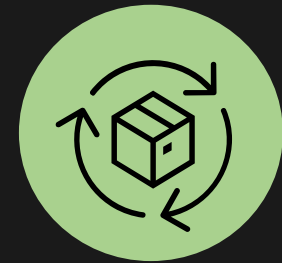
Zero Contact Policy



Provisional Goods Declaration



Installation of
new/enhanced IT
systems

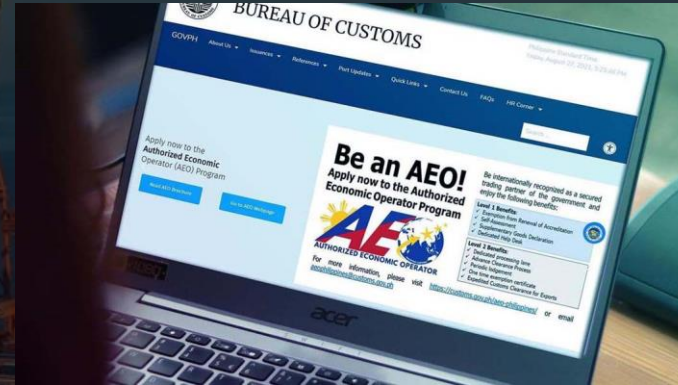


Simplification of Import
and Export process

Recommendation from 2020 TRS

1. Programs already in early stages of development be fully implemented to achieve maximum benefit for the bureau and its customers. These include the bureau's Authorized Economic Operator (AEO) program, the Advance Ruling Program, and the streamlining of processes in export, which are already part of the overall trade facilitation program of the Commissioner.

Enhancements made in 2021



Authorized Economic Operator (AEO) Online Portal System

Accredited AEOs
1. Toyota



Electronic Advance Ruling System

Recommendation from 2020 TRS

- The bureau is also still pursuing its **Customs Modernization Program**, which includes the implementation of the **Single Window (NSW)** and development of various IT systems included in the **BOC-World Bank Project**. Once implemented, it is expected that it will further improve the performance of the ports and the bureau, as a whole.

Automation of 82% (139 out of 170) of the Customs Processes

Enhancements made in 2021

30 ICT SYSTEMS IMPLEMENTED

1. Customs Dashboard
2. High-Performance Server
3. Co-location/Backup Server
4. Customer Care Portal System (CCPS)
5. Document Tracking System (DTS)
6. Cargo Targeting System
7. Alert Orders Monitoring System (AOMS)
8. Parcel and Balikbayan Boxes Tracking System
9. Informal Entry System (IES) for Low Dutiable Value
10. Trade Engine (TRE)
11. Universal Risk Management System
12. Electronic Tracking of Containerized Cargo (E-TRACC)
13. Enhanced Value Reference Information System (e-VRIS)
14. Internal Administration Management System (IAMS)
15. E2M Stabilization, Support, and Maintenance
16. Authorized Economic Operator (AEO) Online Portal
17. Electronic Advance Ruling System (e-ARS)
18. Computerization of Super Green Lane Office
19. General Transportation Surety Bond Online Inquiry
20. Automated Routing and Monitoring System (ARMS)
21. Automated Inventory Management System for CBW (AIMS)
22. Inventory Management System (IMS) for CY/CFS
23. Client Profile Registration System (CPRS) Status Online Inquiry
24. Automated Bonds Management System (ABMS)
25. Pre-payment Online Inquiry System (POIS)
26. Prepayment System for all types of Declarations
27. Offense Database
28. Backup Network and Internet
29. Electronic Certificate of Origin (eCO)
30. National Customs Enforcement Network (NCEN)

Recommendation from 2020 TRS

Enhancements made in 2021

3. With respect to the newly installed **Customer Care Portal**, which is a system where importers and brokers can submit soft copies of goods declaration by creating a "ticket" and which complies with the "No Contact Policy" of the bureau, the same should be further developed and expanded to provide full operational support in fast-tracking all kinds of customs transactions.

CCPS was improved and expanded to all (17) Collection Districts.

System downtimes were addressed through various enhancement made in internet services and automated systems

Recommendation from 2020 TRS

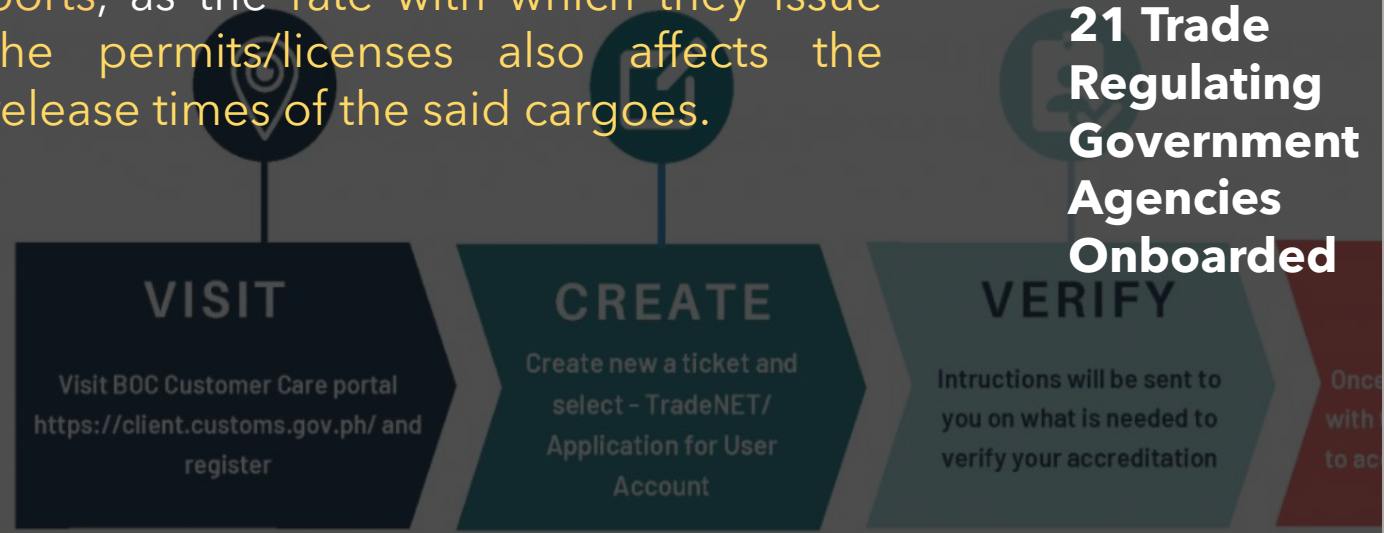
4. Likewise, it is proposed that the next TRS be given a national perspective by including other government permitting agencies involved in the importations or exportations of cargoes in the subject ports, as the rate with which they issue the permits/licenses also affects the release times of the said cargoes.

21 Trade Regulating Government Agencies Onboarded

Enhancements made in 2021

- Onboarded in 2020:**
1. Biodiversity Management Bureau (BMB)
 2. National Tobacco Administration (NTA)
 3. Philippine Drug Enforcement Agency (PDEA)
 4. Bureau of Customs (BOC)
- Onboarded in 2021:**
5. Bureau of Agriculture and Fisheries Standards (BAFS)
 6. DTI - Export Marketing Bureau (DTI-EMB)
 7. National Meat Inspection Service (NMIS)
 8. Fertilizer and Pesticide Authority (FPA)
 9. Sugar Regulatory Administration (SRA)
 10. Optical Media Board (OMB)
 11. Bureau of Plant Industry (BPI)
 12. Philippine Nuclear Research Institute (PNRI)
 13. Bureau of Quarantine (BOQ)
 14. Philippine Coconut Authority (PCA)
 15. Bureau of Fisheries and Aquatic Resources (BFAR)
 16. Philippine National Police - Firearms and Explosives Office (PNP-FEO)
 17. Oil Industry Management Bureau (OIMB)
 18. Bureau of Animal Industry (BAI)
 19. National Telecommunications Commission (NTC)
 20. Bureau of Internal Revenue (BIR)
 21. Department of Foreign Affairs - Office of Protocol (DFA)

HOW TO ACCESS THE TRADENET PORTAL

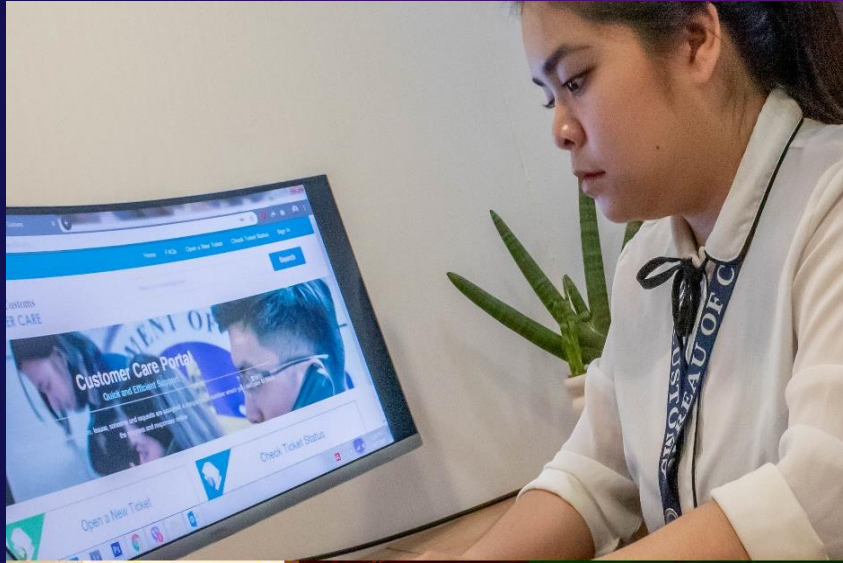


Recommendations in 2021 TRS

1. Improve and promote trade facilitation programs to realize the potential maximum benefits for the BOC and stakeholders like the AEO Program. To accredit more companies to the AEO Program and set guidelines for the Level 2 and 3 Operationalization.



Recommendations in 2021 TRS



2. Implement the Philippine Customs Modernization Program or PCMP, with the support provided by the World Bank Group, and to continue systems and process improvement and upgrade.

The establishment of the New Customs Processing System with Remote Image Analysis Centers (RIACs) is expected to streamline operations and processes and support the reform agenda by upgrading BOC systems, procedures, and operational activities.

Recommendations in 2021 TRS

3. Expand and continue the onboarding of government permitting agencies involved in the importations or exportations of cargoes in the subject ports, to expedite the issuance of permits/licenses that affects the release times of the cargoes.



Recommendations in 2021 TRS



4. Further enhance trade facilitation through implementing the BOC-TFC and WCO Joint Activities on Trade Facilitation, supporting the PTFC in implementing the 2022-2026 TF Roadmap, complying with the Trade Facilitation Agreement (TFA) through Mercator and other WCO TF programs and working with other Funding Donors (World Bank, USAID, UNESCAP, etc) to strengthen trade facilitation initiatives

Thank you!



Philippine Bureau of Customs
An Island of Good Governance