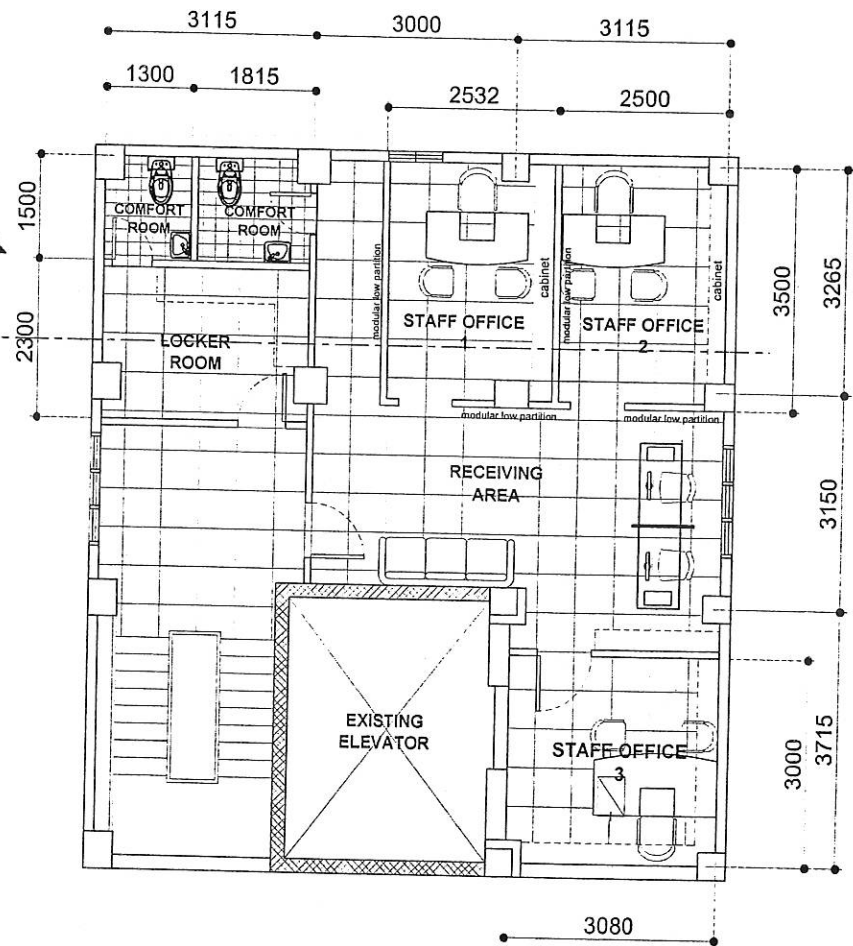


EXISTING 6th FLOOR PLAN OF POM BLDG.  
NOT TO SCALE



PROPOSED 6th FLOOR PLAN OF POM BLDG.  
NOT TO SCALE



RA 545 ART. 2 SEC. 25 (4)

ALL DESIGNS, DRAWINGS, SPECIFICATIONS, AND COPIES THEREOF, PREPARED AND FURNISHED BY THE ARCHITECT IN CONNECTION WITH THE PROJECT, ARE INSTRUMENTS OF PROFESSIONAL SERVICE. AS INSTRUMENTS OF PROFESSIONAL SERVICE THEY ARE THE PROPERTY OF THE ARCHITECT WHETHER THE WORK FOR WHICH THEY ARE MADE MAY BE EXECUTED OR NOT, AND ARE NOT TO BE REPRODUCED OR USED ON OTHER WORK EXCEPT BY THE WRITTEN AGREEMENT WITH THE ARCHITECT.

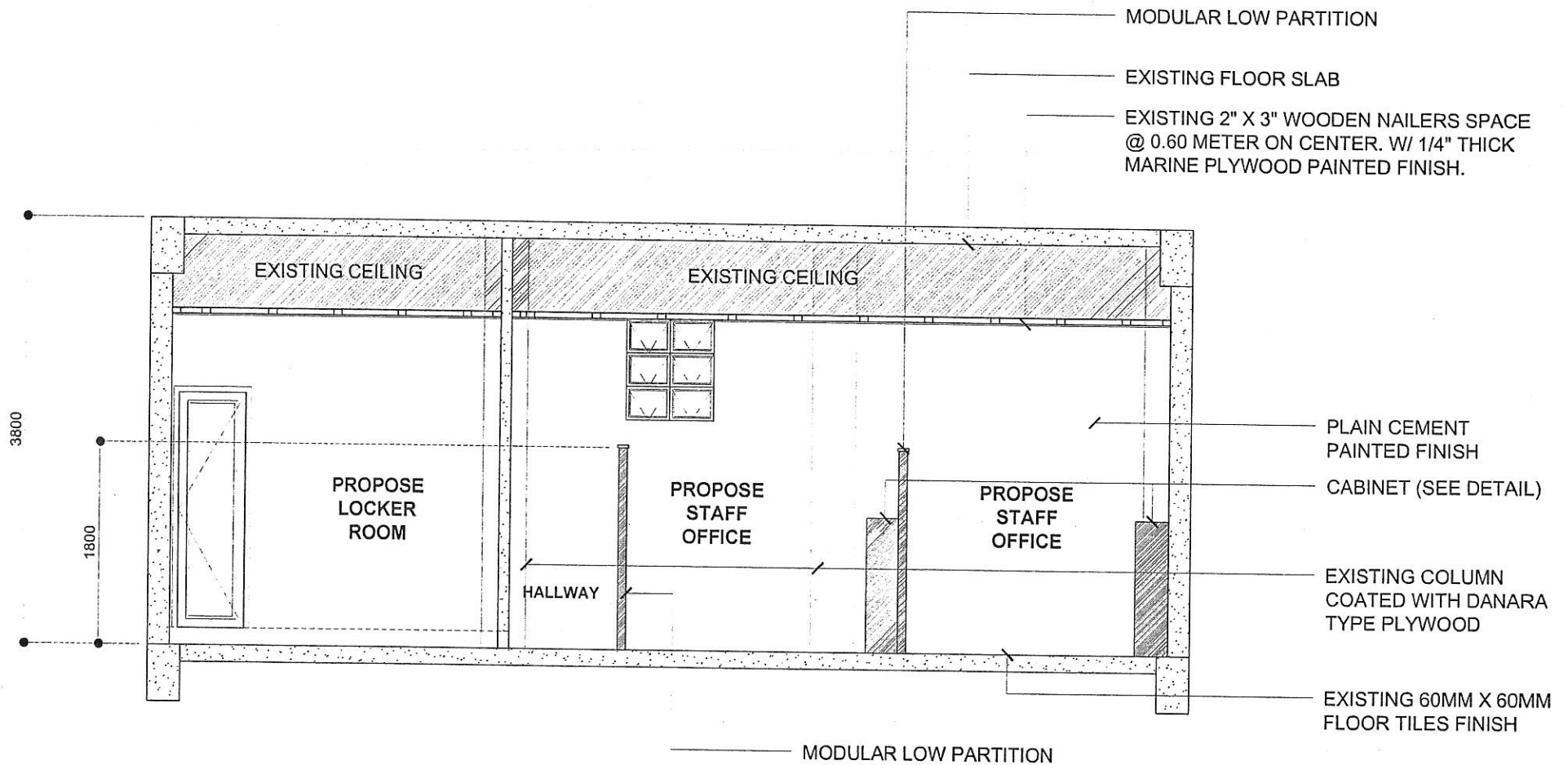
ARCHITECT		ENGINEER	
PPC REG. NO.		PPC REG. NO.	
PTR NO.		PTR NO.	
DATE		DATE	
PLACE		PLACE	
DN		DN	

PROJECT TITLE:	OWNER:
RENOVATION OF 6 <sup>TH</sup> & 7 <sup>TH</sup> FLOOR OF POM BUILDING	BUREAU OF CUSTOMS
LOCATION: SOUTH HARBOR, PORT OF MANILA	

SHEET CONTENT:	DRAWN BY:
A	 GENBERT S. GUSAGO DRAFTSMAN, BOC-GSD
B	
C	
D	

SHEET NO.
A

DATE	SCALE



6th FLOOR PLAN SECTION THRU A  
NOT TO SCALE

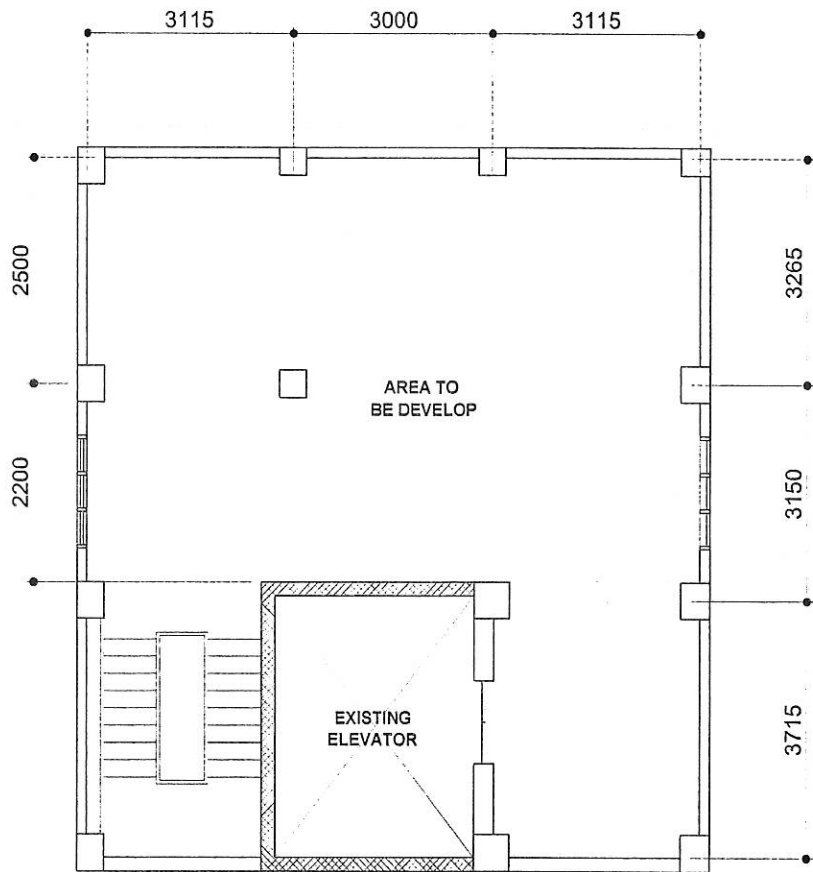


RA 545 ART. 2 SEC. 25 (4)  
ALL DESIGNS, DRAWINGS, SPECIFICATIONS, AND COPIES THEREOF, PREPARED AND FURNISHED BY THE ARCHITECT IN CONNECTION WITH THE PROJECT, ARE INSTRUMENTS OF PROFESSIONAL SERVICE AS INSTRUMENTS OF PROFESSIONAL SERVICE THEY ARE THE PROPERTY OF THE ARCHITECT WHETHER THE WORK FOR WHICH THEY ARE MADE MAY BE EXECUTED OR NOT, AND ARE NOT TO BE REPRODUCED OR USED ON OTHER WORK EXCEPT BY THE WRITTEN AGREEMENT WITH THE ARCHITECT.

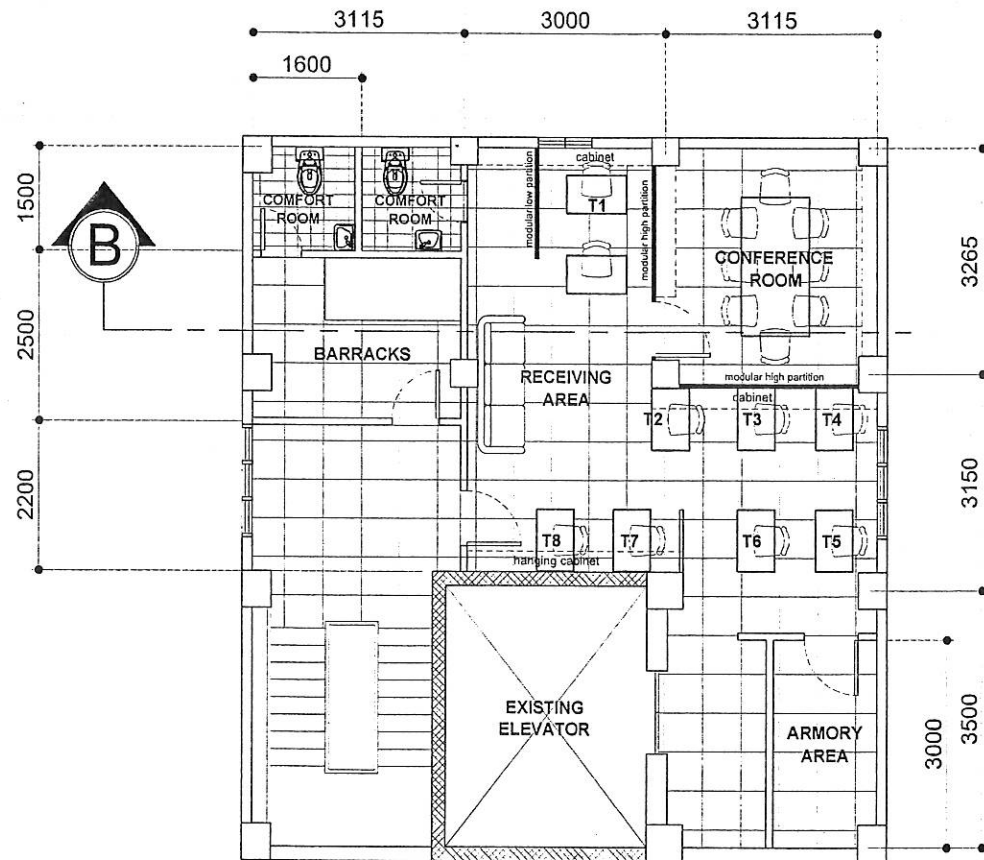
ARCHITECT		ENGINEER	
PRC REG. NO:		PRC REG. NO:	
PIR NO:		PIR NO:	
DATE:		DATE:	
PLACE:		PLACE:	
TIN:		TIN:	

PROJECT TITLE:	OWNER:
RENOVATION OF 6 <sup>TH</sup> & 7 <sup>TH</sup> FLOOR OF POM BUILDING	BUREAU OF CUSTOMS
LOCATION: SOUTH HARBOR, PORT OF MANILA	

SHEET CONTENT:	DRAWN BY:	SHEET NO.
A	 GENBERT S. GUSAGO DRAFTSMAN, BOC-GSD	A
B		2
C		
D		



EXISTING 7th FLOOR PLAN OF POM BLDG.  
NOT TO SCALE



PROPOSED 7th FLOOR PLAN OF POM BLDG.  
NOT TO SCALE



RA 545 ART. 2 SEC. 25 (4)

ALL DESIGNS, DRAWINGS, SPECIFICATIONS, AND COPIES THEREOF, PREPARED AND FURNISHED BY THE ARCHITECT IN CONNECTION WITH THE PROJECT, ARE INSTRUMENTS OF PROFESSIONAL SERVICE. AS INSTRUMENTS OF PROFESSIONAL SERVICE THEY ARE THE PROPERTY OF THE ARCHITECT WHETHER THE WORK FOR WHICH THEY ARE MADE MAY BE EXECUTED OR NOT, AND ARE NOT TO BE REPRODUCED OR USED ON OTHER WORK EXCEPT BY THE WRITTEN AGREEMENT WITH THE ARCHITECT.

ARCHITECT		ENGINEER	
PRC REG. NO.:		PTR REG. NO.:	
DATE:		DATE:	
PLACE:		PLACE:	
TITLE:		TITLE:	

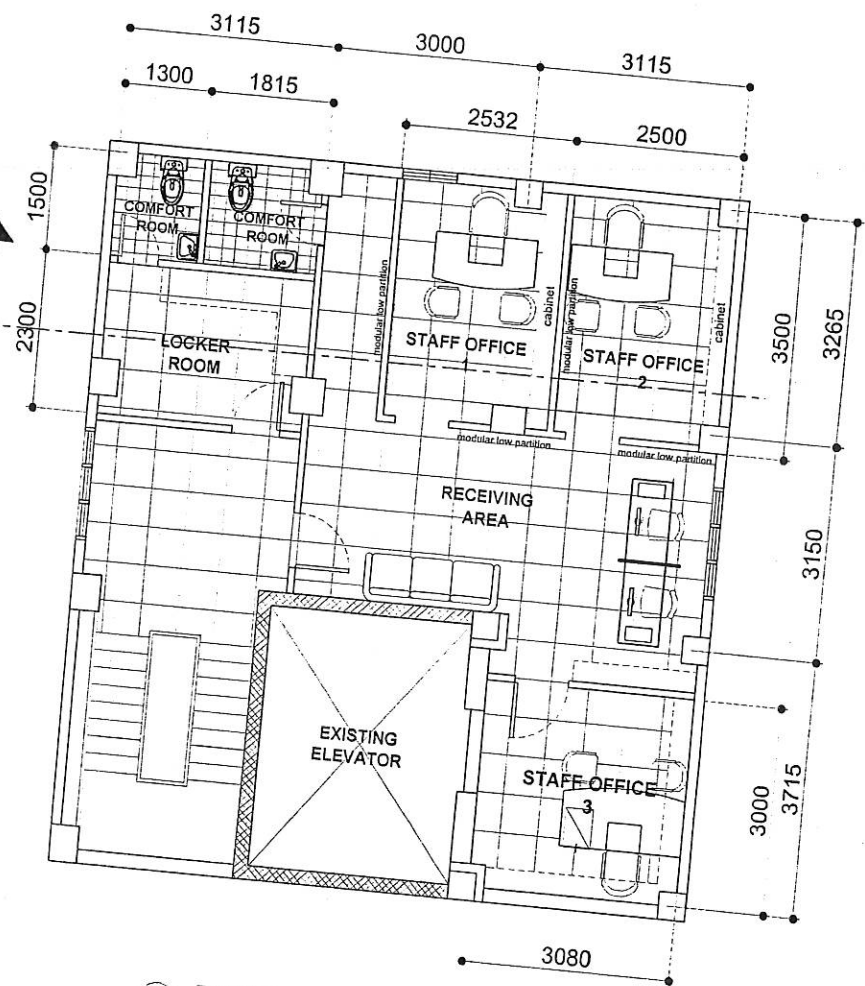
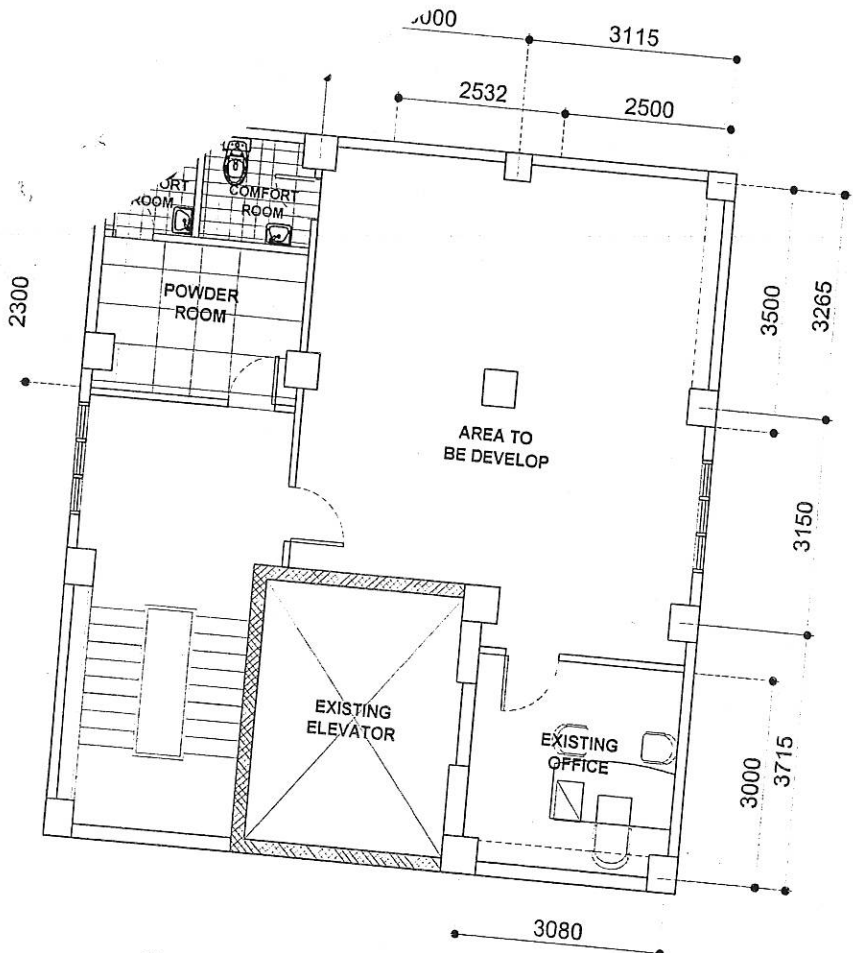
PROJECT TITLE:	RENOVATION OF 6 <sup>TH</sup> & 7 <sup>TH</sup> FLOOR OF POM BUILDING
LOCATION:	SOUTH HARBOR, PORT OF MANILA

OWNER:	BUREAU OF CUSTOMS
--------	-------------------

SHEET CONTENT:	A
	B
	C
	D

DRAWN BY:	
	GENBERT S. CUSAGO
	RAFTSMAN, BOC-GSD

SHEET NO.	A1
	1



RA 545 ART. 2 SEC. 25 (4)  
ALL DESIGNS, DRAWINGS, SPECIFICATIONS, AND COPIES THEREOF, PREPARED AND FURNISHED BY THE ARCHITECT IN CONNECTION WITH THE PROJECT, ARE INSTRUMENTS OF PROFESSIONAL SERVICE, AS INSTRUMENTS OF PROFESSIONAL SERVICE, THE PROPERTY OF THE ARCHITECT WHETHER THE WORK FOR WHICH THEY ARE MADE MAY BE EXECUTED OR NOT, AND ARE NOT TO BE REPRODUCED OR USED ON OTHER WORK EXCEPT BY THE WRITTEN AGREEMENT WITH THE ARCHITECT.

ARCHITECT		ENGINEER	
PRC REG. NO:		PRC REG. NO:	
PIR NO:		PIR NO:	
DATE:		DATE:	
PLACE:		PLACE:	
TIC:		TIC:	

PROJECT TITLE:  
**RENOVATION OF 6<sup>TH</sup> & 7<sup>TH</sup> FLOOR OF POM BUILDING**

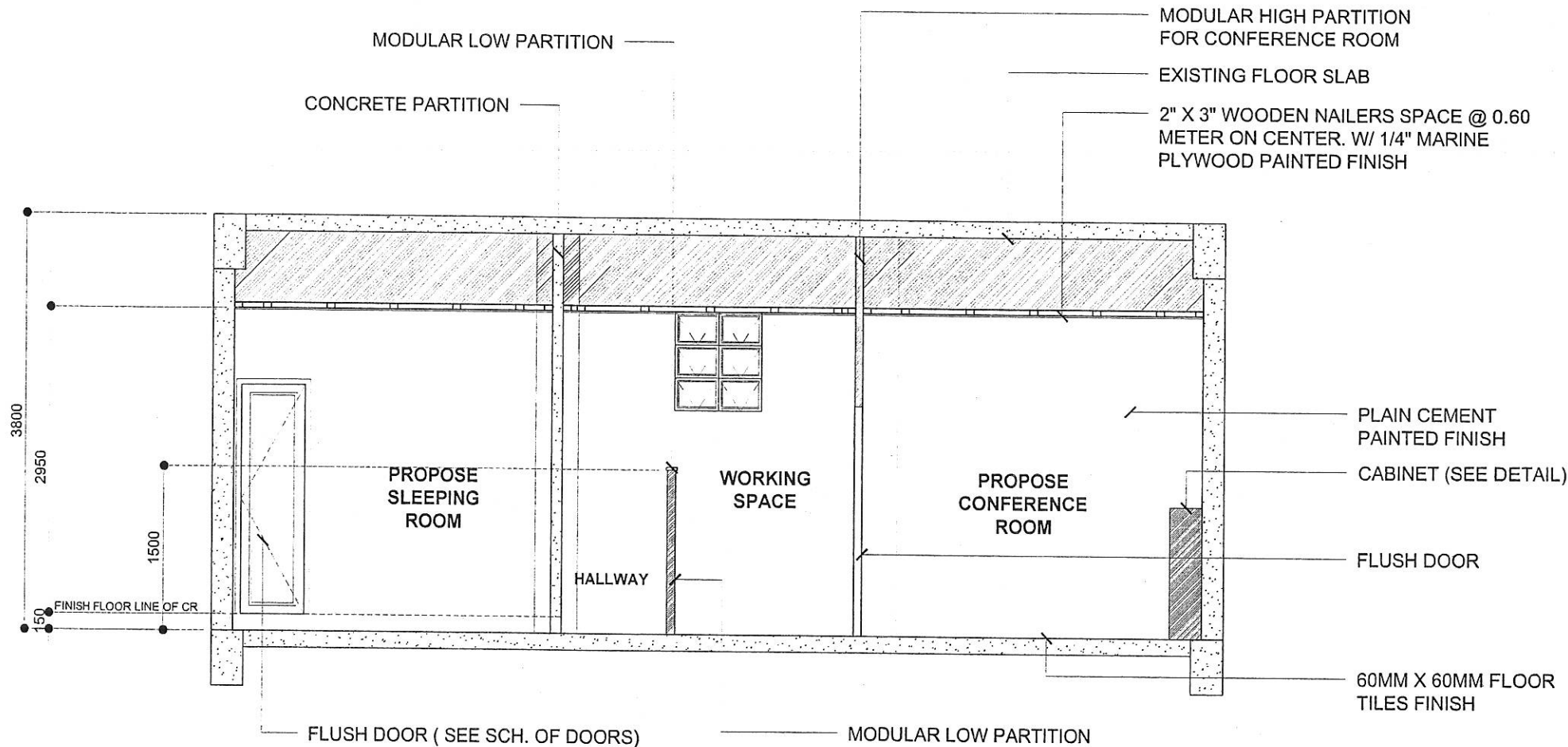
LOCATION: SOUTH HARBOR, PORT OF MANILA

OWNER:  
**BUREAU OF CUSTOMS**

SHEET CONTENT:	
A	
B	
C	
D	

DRAWN BY:  
**GEMBER S. GUSAGO**  
DRAFTSMAN, BOC-GSD

SHEET NO.  
**A**



7th FLOOR PLAN SECTION THRU B  
NOT TO SCALE

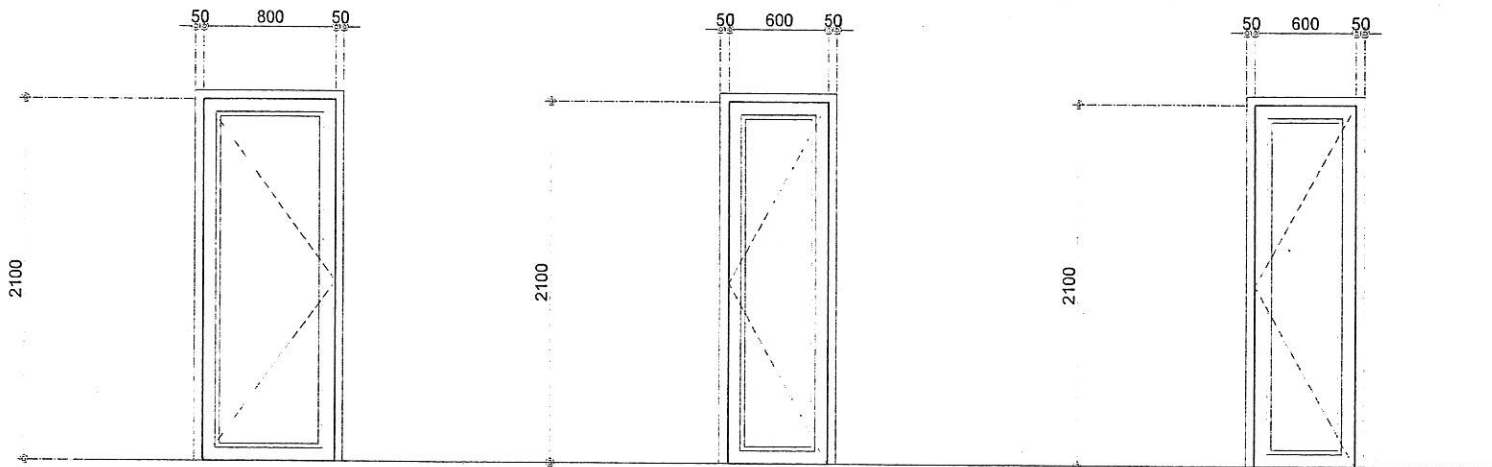


RA 545 ART. 2 SEC. 25 (4)  
 ALL DESIGNS, DRAWINGS, SPECIFICATIONS, AND COPIES THEREOF, PREPARED AND FURNISHED BY THE ARCHITECT IN CONNECTION WITH THE PROJECT, ARE INSTRUMENTS OF PROFESSIONAL SERVICE AS INSTRUMENTS OF PROFESSIONAL SERVICE THEY ARE THE PROPERTY OF THE ARCHITECT WHETHER THE WORK FOR WHICH THEY ARE MADE MAY BE EXECUTED OR NOT, AND ARE NOT TO BE REPRODUCED OR USED ON OTHER WORK EXCEPT BY THE WRITTEN AGREEMENT WITH THE ARCHITECT.

ARCHITECT		ENGINEER	
PRC REG. NO.		PRC REG. NO.	
PTR NO.		PTR NO.	
DATE:		DATE:	
PLACE:		PLACE:	
TITLE:		TITLE:	

PROJECT TITLE:	OWNER:
RENOVATION OF 6 <sup>TH</sup> & 7 <sup>TH</sup> FLOOR OF POM BUILDING	BUREAU OF CUSTOMS
LOCATION: SOUTH HARBOR, PORT OF MANILA	

SHEET CONTENT:	DRAWN BY:	SHEET NO.
A	 GENDERT S. GUSAGO DRAFTSMAN, BOC-OSD	A1
B		2
C		
D		


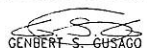


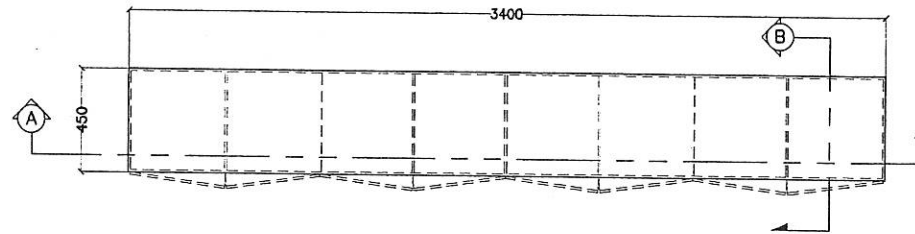
**D-1** TYPE : SWING FLUSH DOOR  
 MATERIALS : WOODEN, PLYWOOD  
 LOCATION : MAIN DOOR, BILLETING AREA  
 FINISHES : PAINTED FINISHES W/ JAMBS  
 NO. OF SET : 2 SETS

**D-2** TYPE : SWING DOOR  
 MATERIALS : PVC  
 LOCATION : CR ENTRANCE  
 FINISHES : PVC W/ JAMBS  
 NO. OF SET : 3 SETS

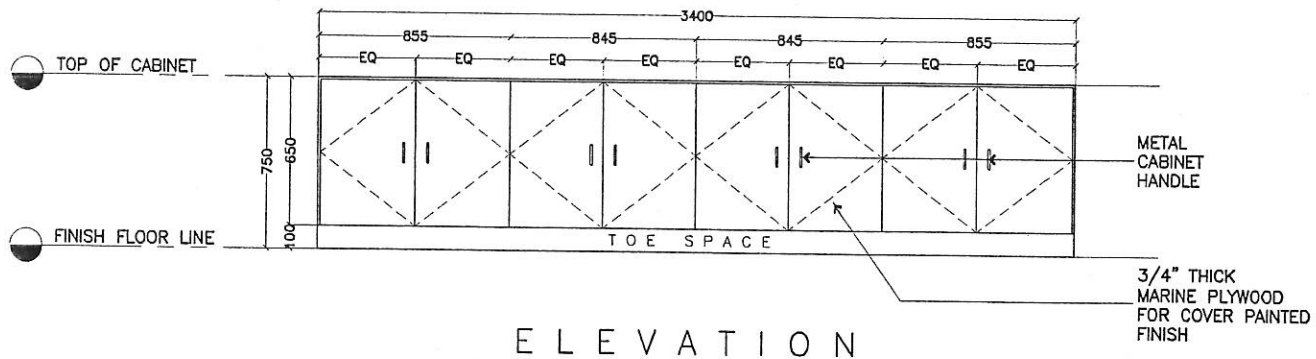
**D-3** TYPE : SWING DOOR  
 MATERIALS : WOOD  
 LOCATION : ARMORY ROOM  
 FINISHES : W/ WOODEN JAMBS  
 NO. OF SET : 3 SETS

**SCHEDULE OF DOORS**  
 NOT TO SCALE

	RA 545 ART. 2 SEC. 25 (4) ALL DESIGNS, DRAWINGS, SPECIFICATIONS, AND COPIES THEREOF, PREPARED AND FURNISHED BY THE ARCHITECT IN CONNECTION WITH THE PROJECT, ARE INSTRUMENTS OF PROFESSIONAL SERVICE. AS INSTRUMENTS OF PROFESSIONAL SERVICE THEY ARE THE PROPERTY OF THE ARCHITECT WHETHER THE WORK FOR WHICH THEY ARE MADE MAY BE EXECUTED OR NOT, AND ARE NOT TO BE REPRODUCED OR USED ON OTHER WORK EXCEPT BY THE WRITTEN AGREEMENT WITH THE ARCHITECT.	ARCHITECT _____ PRC REG. NO.: _____ PIR NO.: _____ DATE: _____ PLACE: _____ TIN: _____	ENGINEER _____ PRC REG. NO.: _____ PIR NO.: _____ DATE: _____ PLACE: _____ TIN: _____	PROJECT TITLE: <b>RENOVATION OF 6<sup>TH</sup> &amp; 7<sup>TH</sup> FLOOR OF POM BUILDING</b> LOCATION: SOUTH HARBOR, PORTH OF MANILA	OWNER: <b>BUREAU OF CUSTOMS</b>	SHEET CONTENT: A _____ B _____ C _____ D _____	DRAWN BY:  <b>GENBERT S. GUSAGO</b> DRAFTSMAN, BOC-GSD	SHEET NO. <b>A1</b> <b>3</b>
-------------------------------------------------------------------------------------	----------------------------------------------------------------------------------------------------------------------------------------------------------------------------------------------------------------------------------------------------------------------------------------------------------------------------------------------------------------------------------------------------------------------------------------------------------------	----------------------------------------------------------------------------------------------------------	---------------------------------------------------------------------------------------------------------	---------------------------------------------------------------------------------------------------------------------------------------------	------------------------------------	------------------------------------------------------------	------------------------------------------------------------------------------------------------------------------------------------------------------	------------------------------------



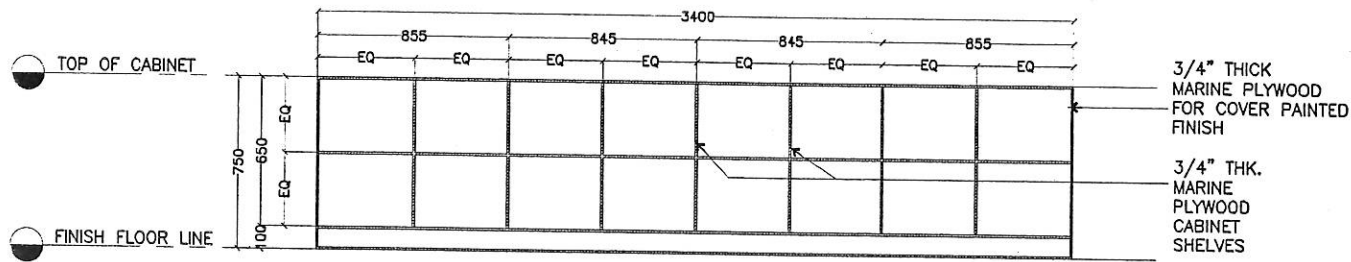
P L A N



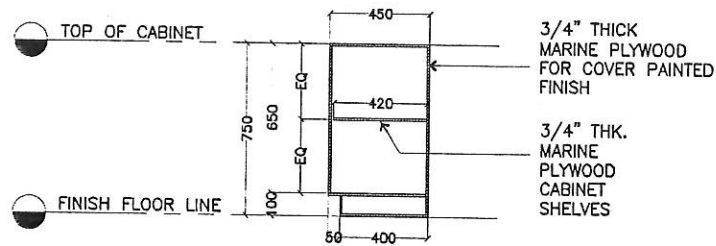
E L E V A T I O N

C A B I N E T D E T A I L S  
N O T T O S C A L E



	RA 545 ART. 2 SEC. 25 (4) ALL DESIGNS, DRAWINGS, SPECIFICATIONS, AND COPIES THEREOF, PREPARED AND FURNISHED BY THE ARCHITECT IN CONNECTION WITH THE PROJECT, ARE INSTRUMENTS OF PROFESSIONAL SERVICE AS INSTRUMENTS OF PROFESSIONAL SERVICE THEY ARE THE PROPERTY OF THE ARCHITECT WHETHER THE WORK FOR WHICH THEY ARE MADE MAY BE OCCASIONED OR NOT, AND ARE NOT TO BE REPRODUCED OR USED ON OTHER WORK EXCEPT BY THE WRITTEN AGREEMENT WITH THE ARCHITECT.	ARCHITECT PRC REG. NO. DATE PLACE TTY	PROJECT TITLE: <b>RENOVATION OF 6<sup>TH</sup> &amp; 7<sup>TH</sup> FLOOR OF POM BUILDING</b>	OWNER: <b>BUREAU OF CUSTOMS</b>	LOCATION: <b>STAFF OFFICE 1 @ 6th FLOOR</b>	QUANTITY: A 1 SET	DRAWN BY:  <b>GENSERT S. GUSAGO</b> DRAFTSMAN, BOC-GSD	SHEET NO. <b>A1</b> <b>4</b>
		ADDRESS: SOUTH HARBOR, PORT OF MANILA						



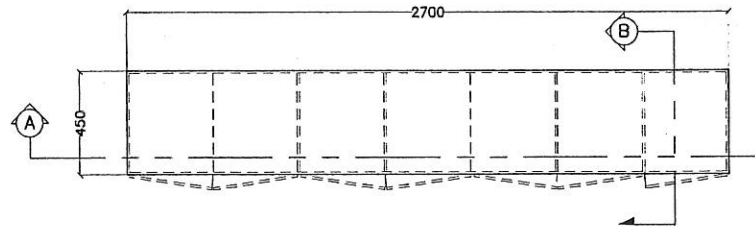
SECTION THRU A



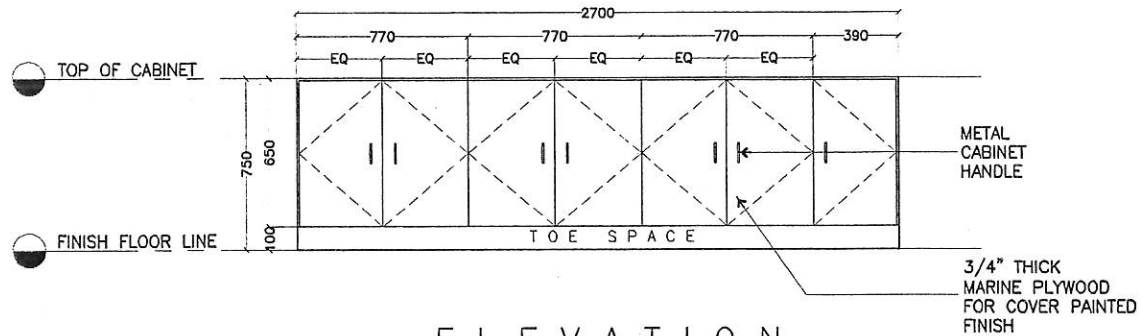
SECTION THRU B

	RA 545 ART. 2 SEC. 25 (4) ALL DESIGNS, DRAWINGS, SPECIFICATIONS, AND COPIES THEREOF, PREPARED AND FURNISHED BY THE ARCHITECT IN CONNECTION WITH THE PROJECT, ARE INSTRUMENTS OF PROFESSIONAL SERVICE. AS INSTRUMENTS OF PROFESSIONAL SERVICE THEY ARE THE PROPERTY OF THE ARCHITECT WHETHER THE WORK FOR WHICH THEY ARE MADE MAY BE EXECUTED OR NOT, AND ARE NOT TO BE REPRODUCED OR USED ON OTHER WORK EXCEPT BY THE WRITTEN AGREEMENT WITH THE ARCHITECT.	ARCHITECT _____ REG. REG. NO. _____ DATE _____ PLACE _____ DIV. _____	PROJECT TITLE: <b>RENOVATION OF 6<sup>TH</sup> &amp; 7<sup>TH</sup> FLOOR OF          POM BUILDING</b>	OWNER: <b>BUREAU OF CUSTOMS</b>	LOCATION: <b>STAFF OFFICE 1          @ 6th FLOOR</b>	QUANTITY: A 1 SET	DRAWN BY:  <b>GENBERT S. GUSAGO</b> DRAFTSMAN, BOC-GSO	SHEET NO. <b>A1</b> <b>5</b>
		ADDRESS: SOUTH HARBOR, PORT OF MANILA						







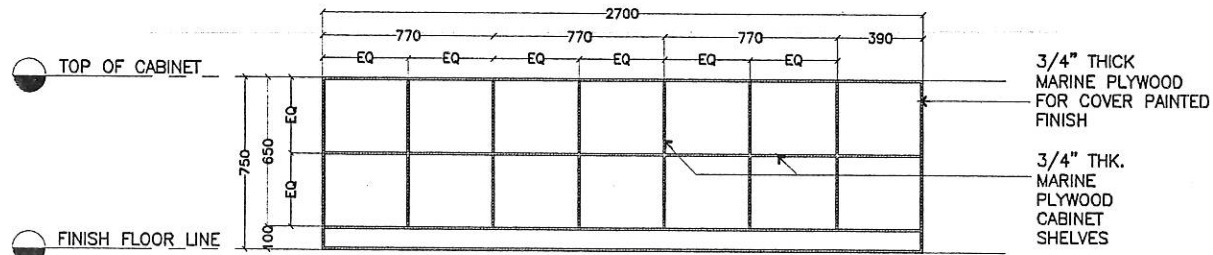
P L A N



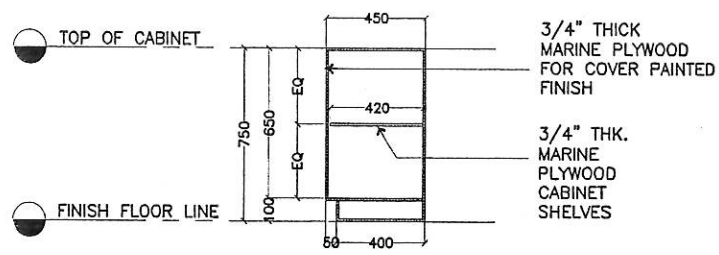
E L E V A T I O N

C A B I N E T D E T A I L S  
N O T T O S C A L E


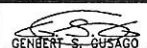
	RA 545 ART. 2 SEC. 25 (4) ALL DESIGNS, DRAWINGS, SPECIFICATIONS, AND COPIES THEREOF, PREPARED AND FURNISHED BY THE ARCHITECT IN CONNECTION WITH THE PROJECT, ARE INSTRUMENTS OF PROFESSIONAL SERVICE. AS INSTRUMENTS OF PROFESSIONAL SERVICE THEY ARE THE PROPERTY OF THE ARCHITECT WHETHER THE WORK FOR WHICH THEY ARE MADE MAY BE EXECUTED OR NOT, AND ARE NOT TO BE REPRODUCED OR USED ON OTHER WORK EXCEPT BY THE WRITTEN AGREEMENT WITH THE ARCHITECT.	ARCHITECT _____ PRC REG. NO. _____ PFR NO. _____ DATE _____ PLACE _____ TIN _____	PROJECT TITLE: <b>RENOVATION OF 6<sup>TH</sup> &amp; 7<sup>TH</sup> FLOOR OF POM BUILDING</b>	OWNER: <b>BUREAU OF CUSTOMS</b>	LOCATION: <b>STAFF OFFICE 2 @ 6th FLOOR</b>	QUANTITY: A 1 SET	DRAWN BY:  <b>GENDERT S. GUSAGO</b> CRAFTSMAN, ROC-GSD	SHEET NO. <b>A1</b> <b>6</b>
		ADDRESS: SOUTH HARBOR, PORT OF MANILA						

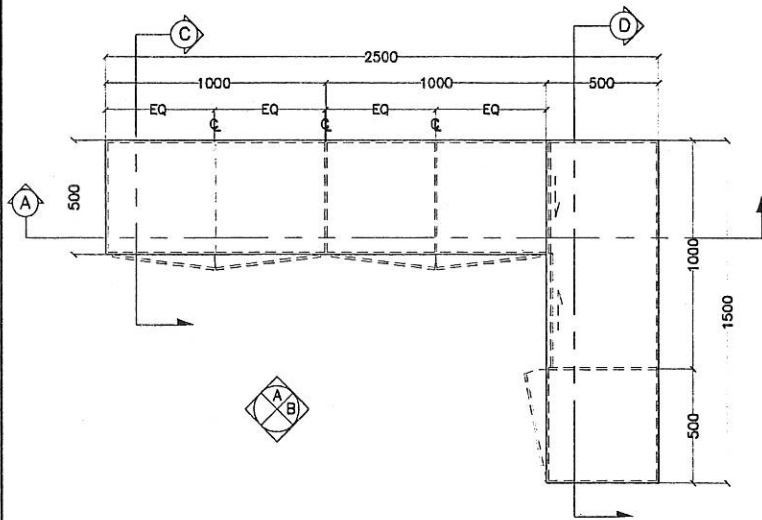


SECTION THRU A

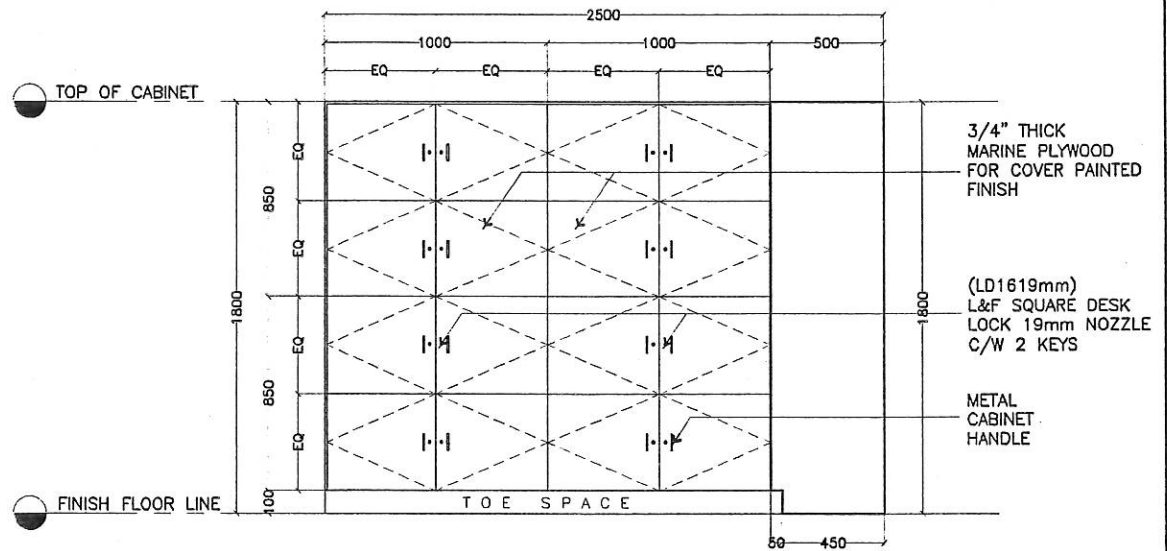


SECTION THRU B

	RA 545 ART. 2 SEC. 25 (4) ALL DESIGNS, DRAWINGS, SPECIFICATIONS, AND COPIES THEREOF, PREPARED AND FURNISHED BY THE ARCHITECT IN CONNECTION WITH THE PROJECT, ARE INSTRUMENTS OF PROFESSIONAL SERVICE. AS INSTRUMENTS OF PROFESSIONAL SERVICE THEY ARE THE PROPERTY OF THE ARCHITECT WHETHER THE WORK FOR WHICH THEY ARE MADE MAY BE EXECUTED OR NOT, AND ARE NOT TO BE REPRODUCED OR USED ON OTHER WORK EXCEPT BY THE WRITTEN AGREEMENT WITH THE ARCHITECT.	PROJECT TITLE:	OWNER:	LOCATION:	QUANTITY:	DRAWN BY:	SHEET NO.
		ARCHITECT: PRC REG. NO.: DATE: PLACE: TIN:	<b>RENOVATION OF 6<sup>TH</sup> &amp; 7<sup>TH</sup> FLOOR OF POM BUILDING</b>	<b>BUREAU OF CUSTOMS</b>	<b>STAFF OFFICE 2 @ 6th FLOOR</b>	A 1 SET	 <b>GENHERT S. GUSAGO</b> DRAFTSMAN, ROC-GSO


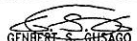


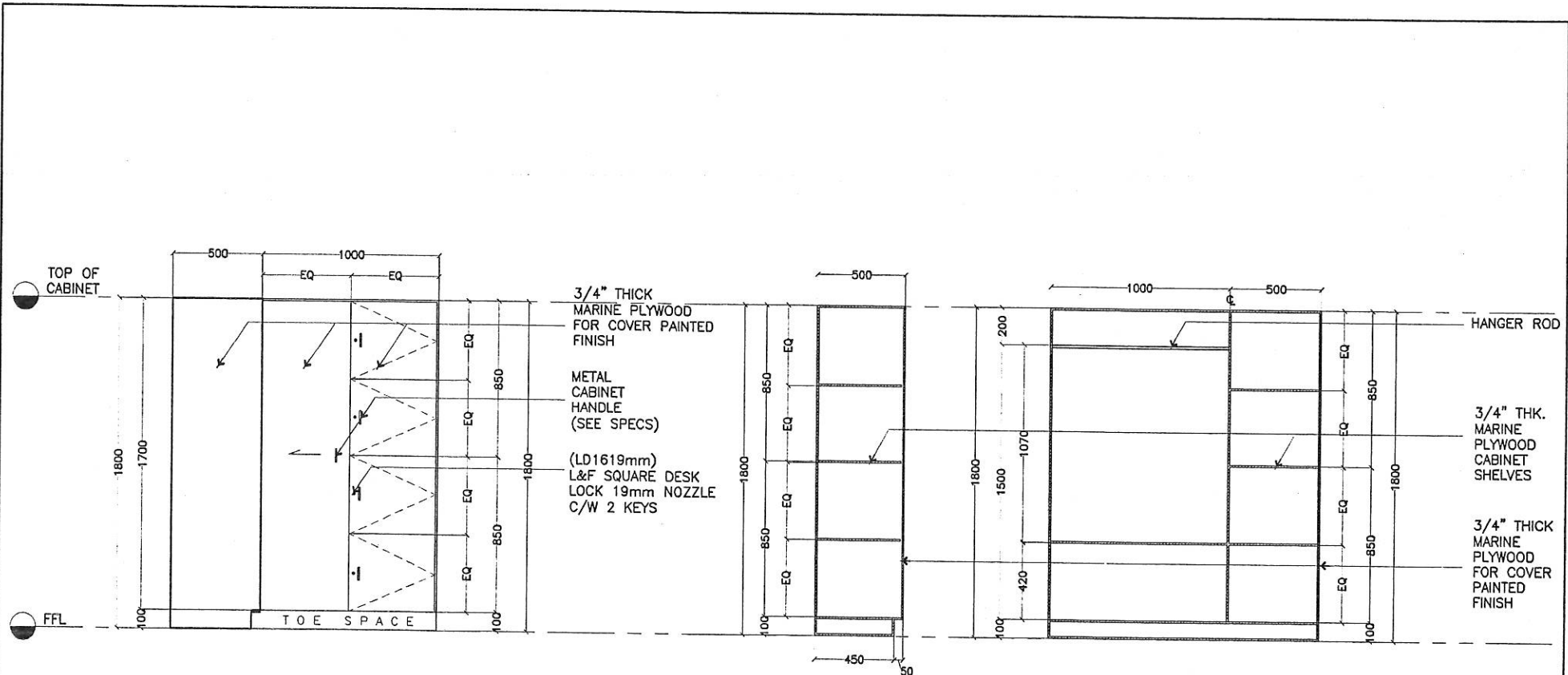
PLAN



ELEVATION A

**CABINET DETAILS**  
NOT TO SCALE

	RA 545 ART. 2 SEC. 25 (4) ALL DESIGNS, DRAWINGS, SPECIFICATIONS, AND COPIES THEREOF, PREPARED AND FURNISHED BY THE ARCHITECT IN CONNECTION WITH THE PROJECT, ARE INSTRUMENTS OF PROFESSIONAL SERVICE. AS INSTRUMENTS OF PROFESSIONAL SERVICE THEY ARE THE PROPERTY OF THE ARCHITECT WHETHER THE WORK FOR WHICH THEY ARE MADE MAY BE EXECUTED OR NOT, AND ARE NOT TO BE REPRODUCED OR USED ON OTHER WORK EXCEPT BY THE WRITTEN AGREEMENT WITH THE ARCHITECT.	ARCHITECT _____ PRC REG. NO. PFR NO. DATE PLACE TIN	PROJECT TITLE: <b>RENOVATION OF 6<sup>TH</sup> &amp; 7<sup>TH</sup> FLOOR OF POM BUILDING</b>	OWNER: <b>BUREAU OF CUSTOMS</b>	LOCATION: <b>LOCKER ROOM</b>	QUANTITY: <b>A 1 SET</b>	DRAWN BY:  <b>GENBERT S. GHUSAGO</b> DRAFTSMAN, ROC-6SD	SHEET NO. <b>A1</b> <b>8</b>
		ADDRESS: SOUTH HARBOR, PORT OF MANILA						



ELEVATION B

SECTION THRU C

SECTION THRU D



RA 545 ART. 2 SEC. 25 (4)  
 ALL DESIGNS, DRAWINGS, SPECIFICATIONS, AND COPIES THEREOF, PREPARED AND FURNISHED BY THE ARCHITECT IN CONNECTION WITH THE PROJECT, ARE INSTRUMENTS OF PROFESSIONAL SERVICE AS INSTRUMENTS OF PROFESSIONAL SERVICE THEY ARE THE PROPERTY OF THE ARCHITECT WHETHER THE WORK FOR WHICH THEY ARE MADE MAY BE EXECUTED OR NOT, AND ARE NOT TO BE REPRODUCED OR USED ON OTHER WORK EXCEPT BY THE WRITTEN AGREEMENT WITH THE ARCHITECT.

ARCHITECT
PRC REG. NO.
LAP. NO.
DATE
PLACE
TN.

PROJECT TITLE:
RENOVATION OF 6 <sup>TH</sup> & 7 <sup>TH</sup> FLOOR OF POM BUILDING
ADDRESS: SOUTH HARBOR, FORTH OF MANILA

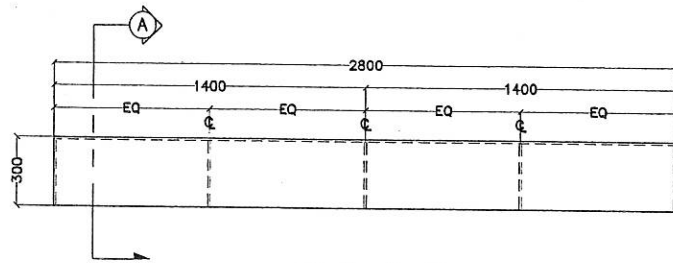
OWNER:
BUREAU OF CUSTOMS

LOCATION:
LOCKER ROOM

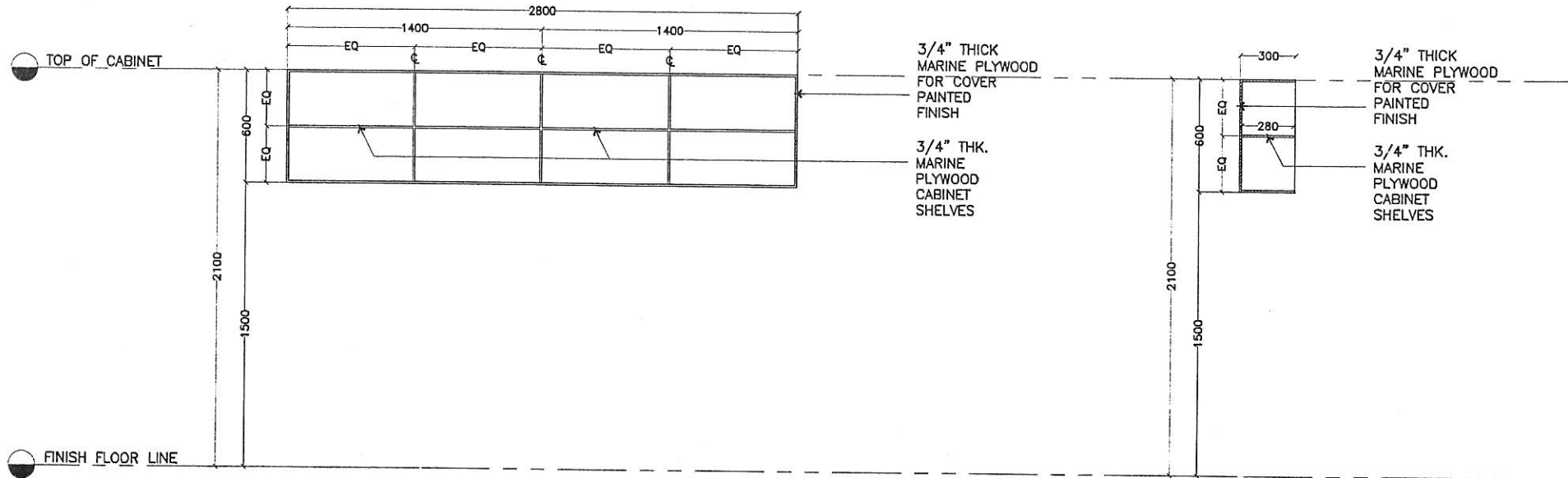
QUANTITY:
A 1 SET

DRAWN BY:  
  
 GENBERT S. GUEJANO  
 DRAFTSMAN, BOC-GSD

SHEET NO.
A1
9


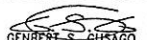


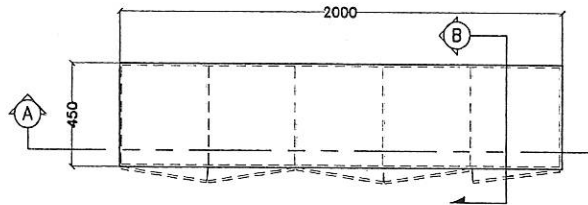
P L A N



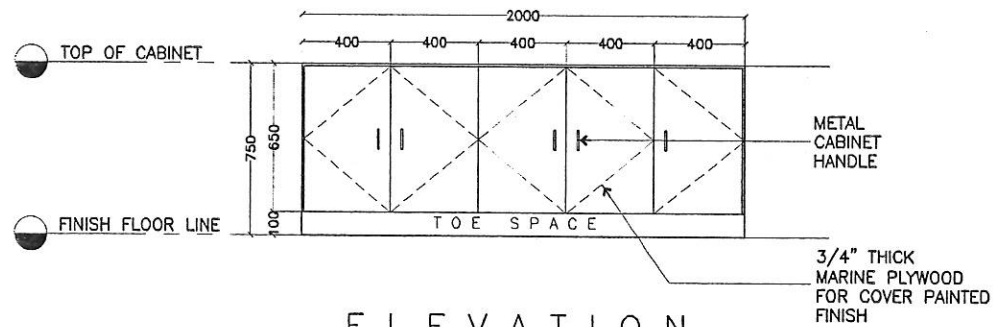
E L E V A T I O N

S E C T I O N T H R U A

	RA 545 ART. 2 SEC. 25 (4) ALL DESIGNS, DRAWINGS, SPECIFICATIONS, AND COPIES THEREOF, PREPARED AND FURNISHED BY THE ARCHITECT IN CONNECTION WITH THE PROJECT, ARE INSTRUMENTS OF PROFESSIONAL SERVICE. AS INSTRUMENTS OF PROFESSIONAL SERVICE THEY ARE THE PROPERTY OF THE ARCHITECT WHETHER THE WORK FOR WHICH THEY ARE MADE MAY BE EXECUTED OR NOT, AND ARE NOT TO BE REPRODUCED OR USED ON OTHER WORK EXCEPT BY THE WRITTEN AGREEMENT WITH THE ARCHITECT.	ARCHITECT _____ (P.R. REG. NO.) _____ (P.R. NO.) _____ DATE: _____ PLACE: _____ TITLE: _____	PROJECT TITLE: <b>RENOVATION OF 6<sup>TH</sup> &amp; 7<sup>TH</sup> FLOOR OF POM BUILDING</b>	OWNER: <b>BUREAU OF CUSTOMS</b>	LOCATION: <b>STAFF OFFICE 3</b>	QUANTITY: <b>A 2 SETS</b>	DRAWN BY:  <b>GENBERT S. GUSAGO</b> DRAFTSMAN, BOC-GSD	SHEET NO. <b>A1</b> <b>10</b>
		ADDRESS: SOUTH HARBOR, PORT OF MANILA						


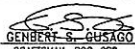


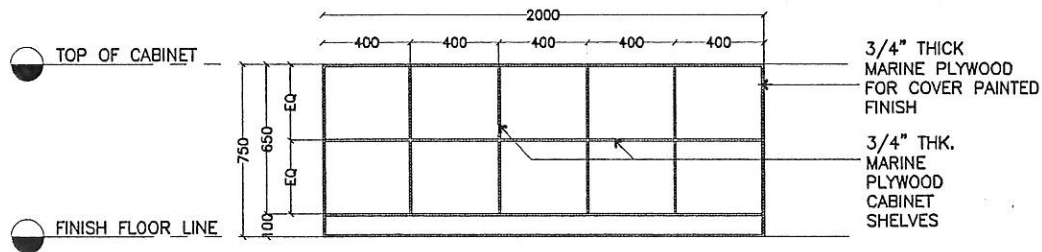
P L A N



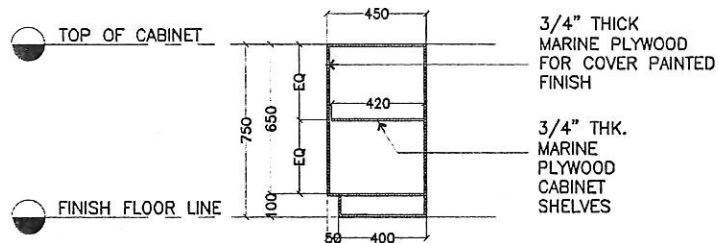
E L E V A T I O N

C A B I N E T D E T A I L S  
N O T T O S C A L E


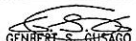
	RA 545 ART. 2 SEC. 25 (4) ALL DESIGNS, DRAWINGS, SPECIFICATIONS, AND COPIES THEREOF, PREPARED AND FURNISHED BY THE ARCHITECT IN CONNECTION WITH THE PROJECT, ARE INSTRUMENTS OF PROFESSIONAL SERVICE AS INSTRUMENTS OF PROFESSIONAL SERVICE THEY ARE THE PROPERTY OF THE ARCHITECT WHETHER THE WORK FOR WHICH THEY ARE MADE MAY BE OCCASIONED OR NOT, AND ARE NOT TO BE REPRODUCED OR USED ON OTHER WORK EXCEPT BY THE WRITTEN AGREEMENT WITH THE ARCHITECT.	ARCHITECT _____ PRC REG. NO. _____ PTR NO. _____ DATE _____ PLACE _____ TIN _____	PROJECT TITLE: <b>RENOVATION OF 6<sup>TH</sup> &amp; 7<sup>TH</sup> FLOOR OF POM BUILDING</b>	OWNER: <b>BUREAU OF CUSTOMS</b>	LOCATION: <b>RECEIVING AREA</b>	QUANTITY: A 1 SET	DRAWN BY:  <b>GENBERT S. GUSAGO</b> DRAFTSMAN, BOC-GSO	SHEET NO. <b>A1</b> <b>11</b>
		ADDRESS: SOUTH HARBOR, PORT OF MANILA						

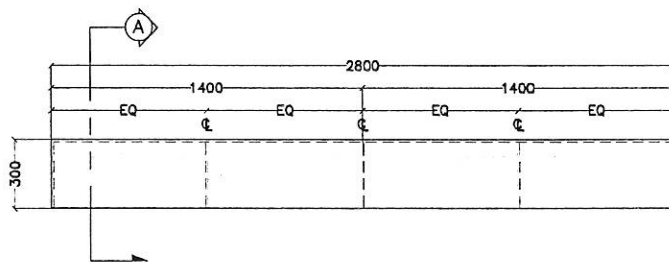


SECTION THRU A

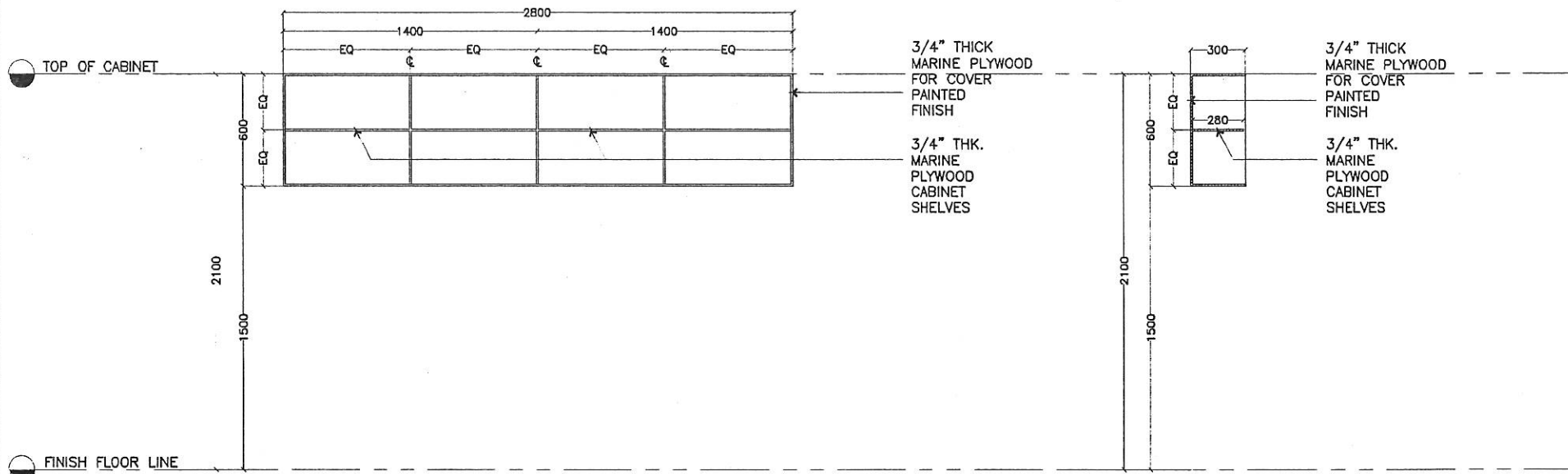


SECTION THRU B

	RA 545 ART. 2 SEC. 25 (4) ALL DESIGNS, DRAWINGS, SPECIFICATIONS, AND COPIES THEREOF, PREPARED AND FURNISHED BY THE ARCHITECT IN CONNECTION WITH THE PROJECT, ARE INSTRUMENTS OF PROFESSIONAL SERVICE. AS INSTRUMENTS OF PROFESSIONAL SERVICE THEY ARE THE PROPERTY OF THE ARCHITECT WHETHER THE WORK FOR WHICH THEY ARE MADE MAY BE EXECUTED OR NOT, AND ARE NOT TO BE REPRODUCED OR USED ON OTHER WORK EXCEPT BY THE WRITTEN AGREEMENT WITH THE ARCHITECT.	ARCHITECT _____ PRC REG. NO. _____ PIR NO. _____ DATE: _____ PLACE: _____ TIN: _____	PROJECT TITLE: <b>RENOVATION OF 6<sup>TH</sup> &amp; 7<sup>TH</sup> FLOOR OF POM BUILDING</b>	OWNER: <b>BUREAU OF CUSTOMS</b>	LOCATION: <b>RECEIVING AREA</b>	QUANTITY: <b>A 1 SET</b>	DRAWN BY:  <b>GENBERT S. GUSAGO</b> DRAFTSMAN, BOC-GSD	SHEET NO. <b>A1</b> <b>12</b>
		ADDRESS: SOUTH HARBOR, PORT OF MANILA						





P L A N

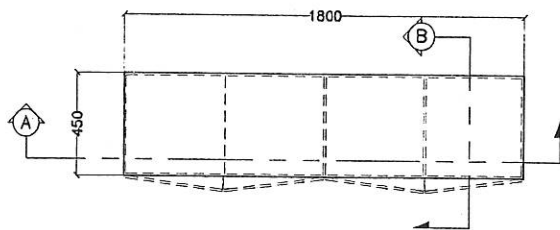


E L E V A T I O N

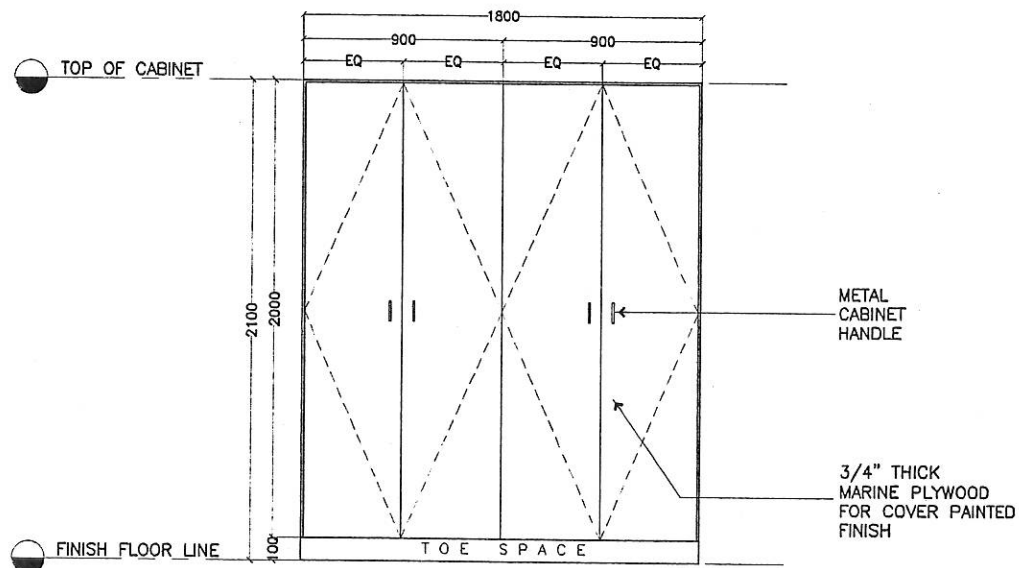
S E C T I O N T H R U A

	RA 545 ART. 2 SEC. 25 (4) ALL DESIGNS, DRAWINGS, SPECIFICATIONS, AND COPIES THEREOF, PREPARED AND FURNISHED BY THE ARCHITECT IN CONNECTION WITH THE PROJECT, ARE INSTRUMENTS OF PROFESSIONAL SERVICE AS INSTRUMENTS OF PROFESSIONAL SERVICE THEY ARE THE PROPERTY OF THE ARCHITECT WHETHER THE WORK FOR WHICH THEY ARE MADE MAY BE EXECUTED OR NOT, AND ARE NOT TO BE REPRODUCED OR USED ON OTHER WORK EXCEPT BY THE WRITTEN AGREEMENT WITH THE ARCHITECT.	ARCHITECT PRC REG. NO. PTR NO. DATE PLACE TIN	PROJECT TITLE: <b>RENOVATION OF 6<sup>TH</sup> &amp; 7<sup>TH</sup> FLOOR OF POM BUILDING</b> ADDRESS: SOUTH HARBOR, PORTH OF MANILA	OWNER: <b>BUREAU OF CUSTOMS</b>	LOCATION: <b>RECEIVING AREA</b>	QUANTITY: A 3 SETS	DRAWN BY:  <b>GENIBERT S. CUSTAGO</b> DRAFTSMAN, BOC-CSD	SHEET NO. <b>A1</b> <b>13</b>
-------------------------------------------------------------------------------------	---------------------------------------------------------------------------------------------------------------------------------------------------------------------------------------------------------------------------------------------------------------------------------------------------------------------------------------------------------------------------------------------------------------------------------------------------------------	--------------------------------------------------------------	--------------------------------------------------------------------------------------------------------------------------------------------	------------------------------------	------------------------------------	-----------------------	--------------------------------------------------------------------------------------------------------------------------------------------------------	-------------------------------------







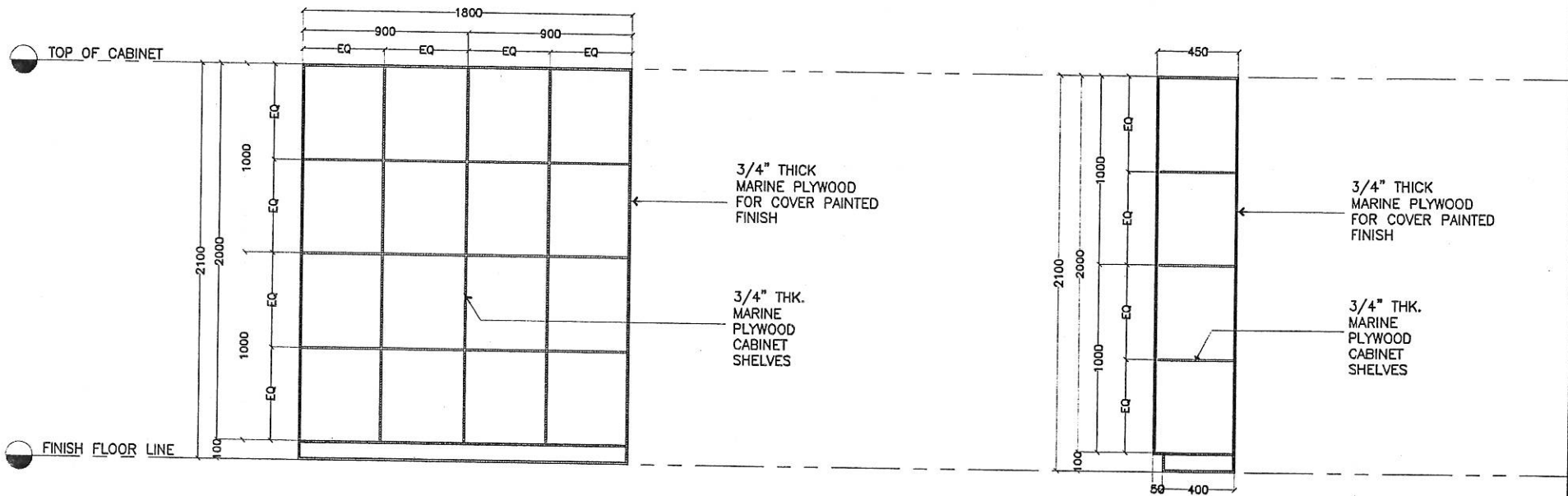
PLAN



ELEVATION

CABINET DETAILS  
NOT TO SCALE

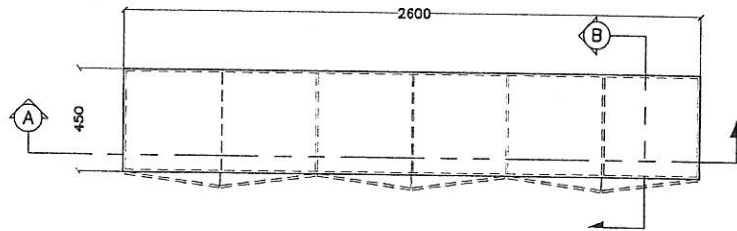
	RA 545 ART. 2 SEC. 25 (4) ALL DESIGNS, DRAWINGS, SPECIFICATIONS, AND COPIES THEREOF, PREPARED AND FURNISHED BY THE ARCHITECT IN CONNECTION WITH THE PROJECT, ARE INSTRUMENTS OF PROFESSIONAL SERVICE AS INSTRUMENTS OF PROFESSIONAL SERVICE THEY ARE THE PROPERTY OF THE ARCHITECT WHETHER THE WORK FOR WHICH THEY ARE MADE MAY BE EXECUTED OR NOT, AND ARE NOT TO BE REPRODUCED OR USED ON OTHER WORK EXCEPT BY THE WRITTEN AGREEMENT WITH THE ARCHITECT.	ARCHITECT _____ PRG REG. NO. _____ PTR NO. _____ DATE _____ PLACE _____ INC. _____	PROJECT TITLE: <b>RENOVATION OF 6<sup>TH</sup> &amp; 7<sup>TH</sup> FLOOR OF POM BUILDING</b>	OWNER: <b>BUREAU OF CUSTOMS</b>	LOCATION: <b>CONFERENCE ROOM</b>	QUANTITY: A 1 SET	DRAWN BY:  <b>GENBERT S. GUSAGO</b> DRAFTSMAN, ROC-CSD	SHEET NO. <b>A1</b> <b>14</b>
		ADDRESS: SOUTH HARBOR, PORT OF MANILA						



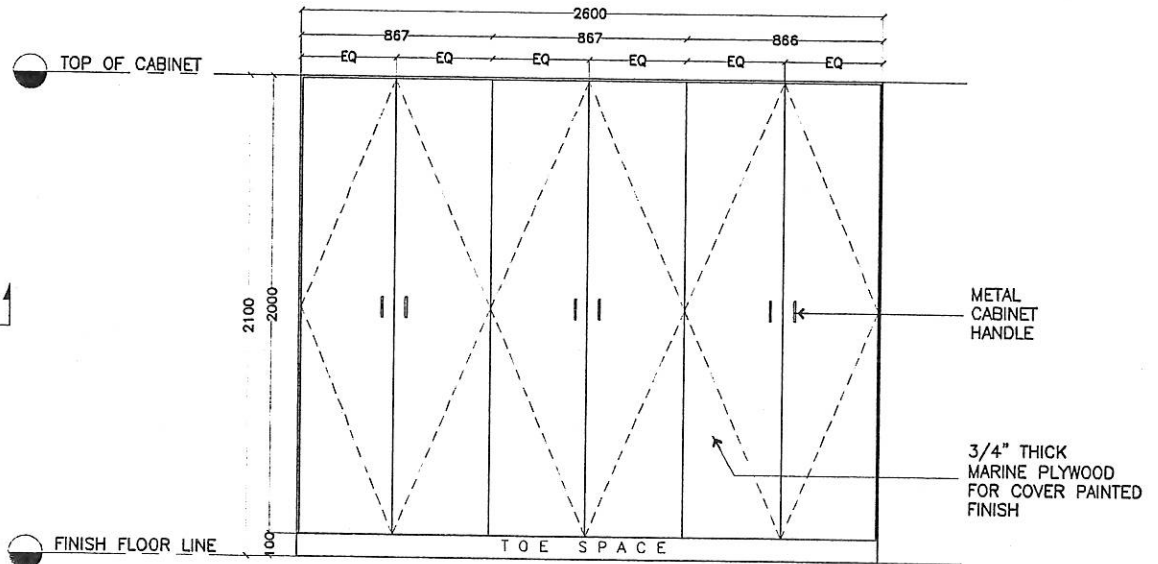
SECTION THRU A

SECTION THRU B

	RA 545 ART. 2 SEC. 25 (4) ALL DESIGNS, DRAWINGS, SPECIFICATIONS, AND COPIES THEREOF, PREPARED AND FURNISHED BY THE ARCHITECT IN CONNECTION WITH THE PROJECT, ARE INSTRUMENTS OF PROFESSIONAL SERVICE. AS INSTRUMENTS OF PROFESSIONAL SERVICE THEY ARE THE PROPERTY OF THE ARCHITECT WHETHER THE WORK FOR WHICH THEY ARE MADE MAY BE EXECUTED OR NOT, AND ARE NOT TO BE REPRODUCED OR USED ON OTHER WORK EXCEPT BY THE WRITTEN AGREEMENT WITH THE ARCHITECT.	ARCHITECT PRG. REG. NO. STR. NO. DATE PLACE TIN	PROJECT TITLE: <b>RENOVATION OF 6<sup>TH</sup> &amp; 7<sup>TH</sup> FLOOR OF POM BUILDING</b>	OWNER: <b>BUREAU OF CUSTOMS</b>	LOCATION: <b>CONFERENCE ROOM</b>	QUANTITY: A 1 SET	DRAWN BY:  <b>GENBERT S. GUSBAGO</b> DRAFTSMAN, BOC-GSD	SHEET NO. <b>A1</b> <b>15</b>
		ADDRESS: SOUTH HARBOUR, PORTH OF MANILA						


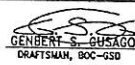


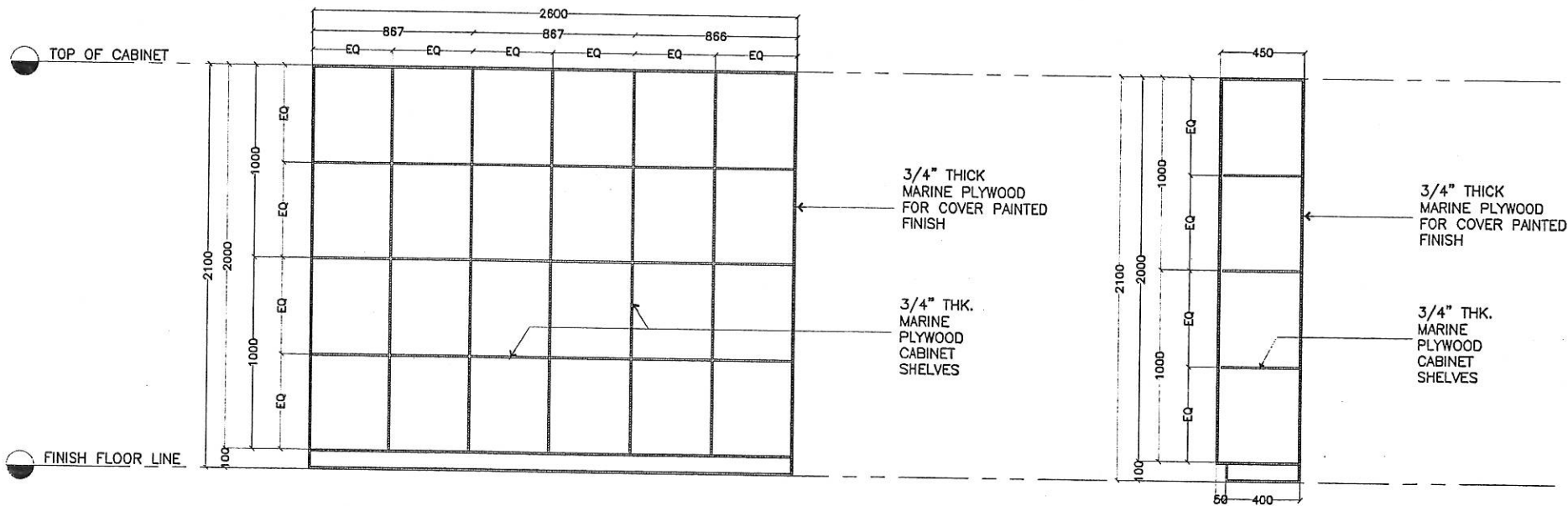
PLAN



ELEVATION



CABINET DETAILS  
NOT TO SCALE

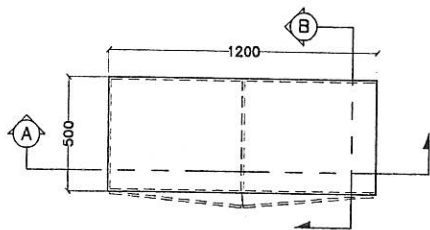
	RA 545 ART. 2 SEC. 25 (4) ALL DESIGN, DRAWINGS, SPECIFICATIONS, AND COPIES THEREOF, PREPARED AND FURNISHED BY THE ARCHITECT IN CONNECTION WITH THE PROJECT, ARE INSTRUMENTS OF PROFESSIONAL SERVICE AS INSTRUMENTS OF PROFESSIONAL SERVICE THEY ARE THE PROPERTY OF THE ARCHITECT WHETHER THE WORK FOR WHICH THEY ARE MADE MAY BE EXECUTED OR NOT, AND ARE NOT TO BE REPRODUCED OR USED ON OTHER WORK EXCEPT BY THE WRITTEN AGREEMENT WITH THE ARCHITECT.	ARCHITECT: _____ PRC REG. NO.: _____ PTR NO.: _____ DATE: _____ PLACE: _____ TIN: _____	PROJECT TITLE: <b>RENOVATION OF 6<sup>TH</sup> &amp; 7<sup>TH</sup> FLOOR OF POM BUILDING</b>	OWNER: <b>BUREAU OF CUSTOMS</b>	LOCATION: <b>CONFERENCE ROOM</b>	QUANTITY: A 1 SET	DRAWN BY:  <b>GENSERT BUSAIGO</b> DRAFTSMAN, ROC-SSB	SHEET NO. <b>A1</b> <b>16</b>
		ADDRESS: SOUTH HARBOR, PORT OF MANILA						



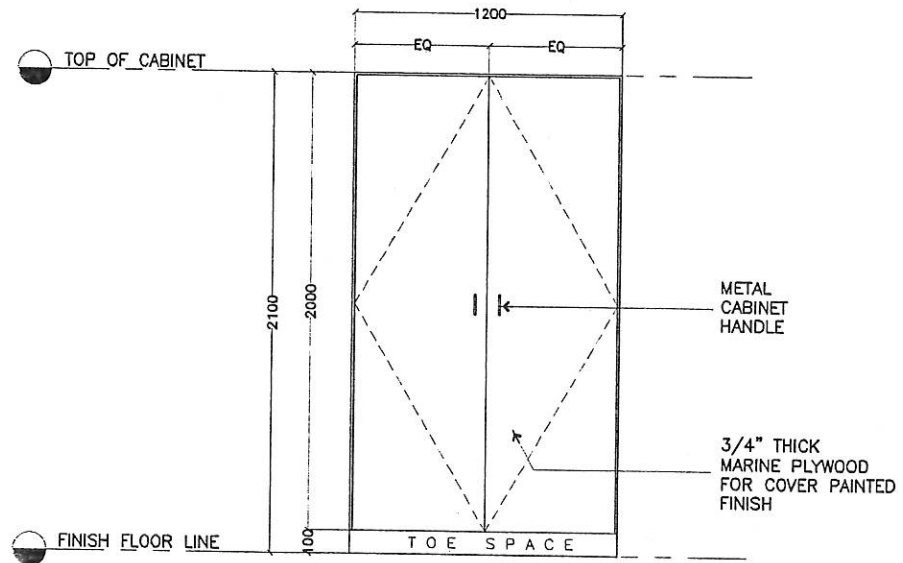
SECTION THRU A

SECTION THRU B

	RA 545 ART. 2 SEC. 25 (4) ALL DESIGNS, DRAWINGS, SPECIFICATIONS, AND COPIES THEREOF, PREPARED AND FURNISHED BY THE ARCHITECT IN CONNECTION WITH THE PROJECT, ARE INSTRUMENTS OF PROFESSIONAL SERVICE AS INSTRUMENTS OF PROFESSIONAL SERVICE THEY ARE THE PROPERTY OF THE ARCHITECT WHETHER THE WORK FOR WHICH THEY ARE MADE MAY BE EXECUTED OR NOT, AND ARE NOT TO BE REPRODUCED OR USED ON OTHER WORK EXCEPT BY THE WRITTEN AGREEMENT WITH THE ARCHITECT.	ARCHITECT _____ PRO REG. NO. _____ DATE _____ PLACE _____ SIGNATURE _____	PROJECT TITLE: <b>RENOVATION OF 6<sup>TH</sup> &amp; 7<sup>TH</sup> FLOOR OF POM BUILDING</b>	OWNER: <b>BUREAU OF CUSTOMS</b>	LOCATION: <b>CONFERENCE ROOM</b>	QUANTITY: A 1 SET	DRAWN BY:  <b>GENBERT S. GUSAGO</b> DRAFTSMAN, BOC-GSD	SHEET NO. <b>A1</b> <b>17</b>
		ADDRESS: SOUTH HARBOR, PORTH OF MANILA						


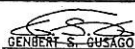


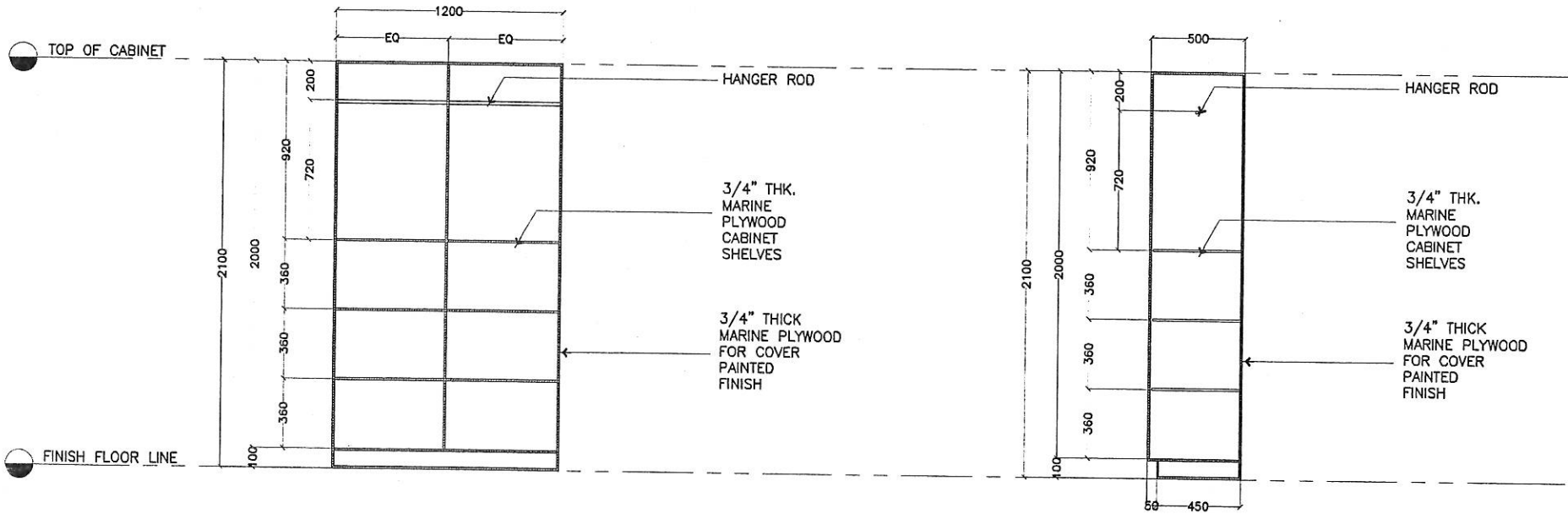
P L A N



E L E V A T I O N


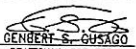
CABINET DETAILS  
NOT TO SCALE

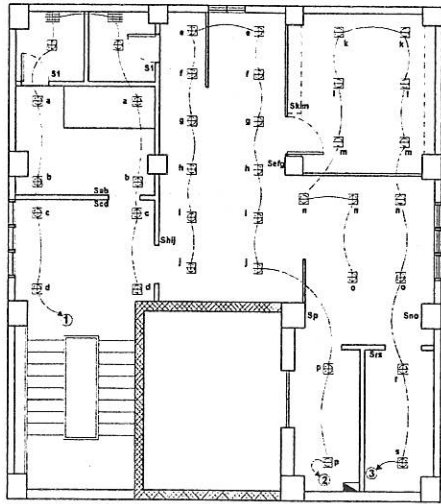
	RA 545 ART. 2 SEC. 23 (4) ALL DESIGNS, DRAWINGS, SPECIFICATIONS, AND COPIES THEREOF, PREPARED AND FURNISHED BY THE ARCHITECT IN CONNECTION WITH THE PROJECT, ARE INSTRUMENTS OF PROFESSIONAL SERVICE AS INSTRUMENTS OF PROFESSIONAL SERVICE THEY ARE THE PROPERTY OF THE ARCHITECT WHETHER THE WORK FOR WHICH THEY ARE MADE MAY BE EXECUTED OR NOT, AND ARE NOT TO BE REPRODUCED OR USED ON OTHER WORK EXCEPT BY THE WRITTEN AGREEMENT WITH THE ARCHITECT.	ARCHITECT PRO. REG. NO. PPR. NO. DATE PLACE TIN	PROJECT TITLE: <b>RENOVATION OF 6<sup>TH</sup> &amp; 7<sup>TH</sup> FLOOR OF POM BUILDING</b>	OWNER: <b>BUREAU OF CUSTOMS</b>	LOCATION: <b>BARRACKS</b>	QUANTITY: A 1 SET	DRAWN BY:  <b>GENYBERT S. GUSAGO</b> DRAFTSMAN, ROC-GSD	SHEET NO. <b>A1</b> <b>18</b>
		ADDRESS: SOUTH HARBOR, FORTH OF MANILA						



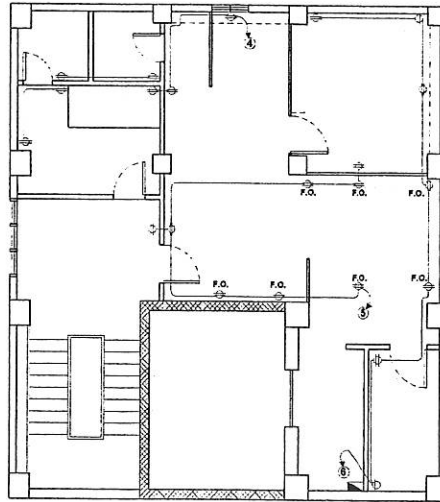
SECTION THRU A

SECTION THRU B

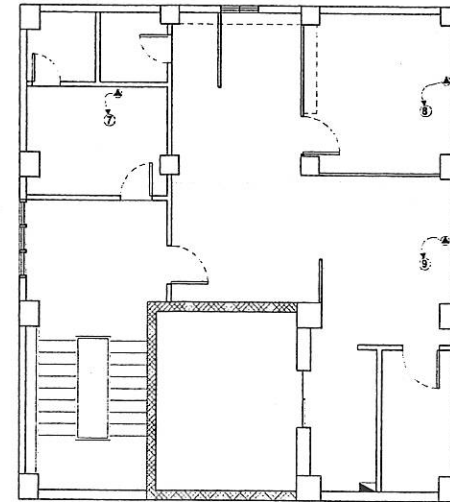
	RA 545 ART. 2 SEC. 25 (4) ALL DESIGNS, DRAWINGS, SPECIFICATIONS, AND COPIES THEREOF, PREPARED AND FURNISHED BY THE ARCHITECT IN CONNECTION WITH THE PROJECT, ARE INSTRUMENTS OF PROFESSIONAL SERVICE AS INSTRUMENTS OF PROFESSIONAL SERVICE THEY ARE THE PROPERTY OF THE ARCHITECT WHETHER THE WORK FOR WHICH THEY ARE MADE MAY BE EXECUTED OR NOT, AND ARE NOT TO BE REPRODUCED OR USED ON OTHER WORK EXCEPT BY THE WRITTEN AGREEMENT WITH THE ARCHITECT.	ARCHITECT _____ <small>PRC REG. NO.</small> <small>PTR NO.</small> <small>DATE</small> <small>PLACE</small> <small>BY</small>	PROJECT TITLE: <b>RENOVATION OF 6<sup>TH</sup> &amp; 7<sup>TH</sup> FLOOR OF POM BUILDING</b>	OWNER: <b>BUREAU OF CUSTOMS</b>	LOCATION: <b>BARRACKS</b>	QUANTITY: A 1 SET	DRAWN BY:  <b>GENBERT S. GUSAGO</b> <small>DRAFTSMAN, BOC-GSO</small>	SHEET NO. <b>A1</b> <b>19</b>
		ADDRESS: SOUTH HARBOR, PORT OF MANILA						



7th Floor Lighting Layout



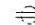



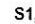


Power Layout



ACU Layout

**LEGEND:**

-  Duct Fan
-  Square Down Light
-  Duplex, Convenience Outlet
-  F.O. Floor Outlet
-  Aircondition Outlet
-  Circuit Homerun
-  Panel Board
- S1, S2, S3. Switches ( Single, Two -Gang, Three -Gang)

**SCHEDULE OF LOAD**

CKT No.	Load Descriptions	QTY	OTHER LOADS	TOTAL VA	VOLTS	AMP / CIRCUIT			CIRCUIT BREAKER			COPPER WIRE		CONDUIT		
						AB	BC	CA	POLE	TYPE	AT	SIZE, SQ mm	TYPE	SIZE, mm	TYPE	
1	Lighting Outlet	10	2 - DUCT FAN	1100	220		5		2	BO	15	3.5	THHN	20	PVC	
2	Lighting Outlet	14		1400	220		6.38		2	BO	15	3.5	THHN	20	PVC	
3	Lighting Outlet	13		1300	220		5.9		2	BO	15	3.5	THHN	20	PVC	
4	Convenience Outlet	7		2520	220		11.45		2	BO	20	3.5	THHN	20	PVC	
5	Convenience Outlet	8		2880	220		13.09		2	BO	20	3.5	THHN	20	PVC	
6	Convenience Outlet	7		2520	220		11.45		2	BO	20	3.5	THHN	20	PVC	
7	ACU 1hp	1		1760	220				2	BO	20	5.5	THHN	20	PVC	
8	ACU 1hp	1		1760	220				2	BO	20	5.5	THHN	20	PVC	
9	ACU 3TR	1		5280	220				24	2	BO	40	8.0	THHN	20	PVC
10	Spare															
<b>TOTAL</b>							30.9	30.38	32							

**TOTAL LOAD:**

A. General Lighting & Convenience Receptacle = 11,720 VA  
 First 10,000 VA @ 100% DF = 10,000VA  
 Remainder @ 50% DF ( 1720 x 0.50 ) = 860 VA  
 = 10,860 VA

B. ACU @ 100 DF  
 1 HP - 2 x 1760 = 3520 VA  
 3 TR - 1 x 5280 = 5280 VA  
 Total Computed Load = 19,660 VA

**SERVICE ENTRANCE CONDUCTOR:**

$I_T = [ 19,660 + 25\% ( 5,280 ) ] \text{ divide } [ 220 \times \sqrt{3} ]$   
 = 55 A

USE: 3 - 38 sq mm THHN, 1 - 8 sq mm THHN (Ground)

Service Equipment:  
 $I_{FL} = [ 250\% ( 5,280 ) + 10,860 + 3,520 ] \text{ divide } [ 220 \times \sqrt{3} ]$   
 = 72.3 A

USE: 100AT, 3P, 3Ø, MCCB, Bolt ON



RA 545 ART. 2 SEC. 25 (4)  
 ALL DESIGNS, DRAWINGS, SPECIFICATIONS, AND COPIES THEREOF, PREPARED AND FURNISHED BY THE ARCHITECT IN CONNECTION WITH THE PROJECT, ARE INSTRUMENTS OF PROFESSIONAL SERVICE. AS INSTRUMENTS OF PROFESSIONAL SERVICE THEY ARE THE PROPERTY OF THE ARCHITECT. WHETHER THE WORK FOR WHICH THEY ARE MADE MAY BE EXECUTED OR NOT, AID ARE NOT TO BE REPRODUCED OR USED ON OTHER WORK EXCEPT BY THE WRITTEN AGREEMENT WITH THE ARCHITECT.


ARCHITECT		ENGINEER	
PRC REG. NO.:		PRC REG. NO.:	
PTR NO.:		PTR NO.:	
DATE:		DATE:	
PLACE:		PLACE:	
TIN:		TIN:	

PROJECT TITLE:  
**RENOVATION OF 6<sup>TH</sup> & 7<sup>TH</sup> FLOOR OF POM BUILDING**

OWNER:  
**BUREAU OF CUSTOMS**

LOCATION: SOUTH HARBOR, PORTH OF MANILA

SHEET CONTENT:	
A	
B	
C	
D	

DRAWN BY:  
  
**GENBERT S. GUSAGO**  
 DRAFTSMAN, 60C-CSD

SHEET NO.  
 1